

**Tillbridge Solar Project
EN010142**

Volume 7

**Joint Report on Interrelationships between Nationally
Significant Infrastructure Projects Part 1 of 3**

Document reference: EN010142/APP/7.6

**Regulation 5(2)(q)
Infrastructure Planning (Applications: Prescribed Forms and Procedure) Regulations
2009**

**April 2024
Revision Number: 00**

**Gate Burton Energy Park Limited, West Burton Solar Project Limited, Tillbridge Solar Limited,
Cottam Solar Project Limited**

tillbridgesolar.com

Prepared for:

Gate Burton Energy Park Limited, West Burton Solar Project Limited, Tillbridge Solar Limited and Cottam Solar Project Limited.

Prepared by:

AECOM Limited

© 2024 AECOM Limited. All Rights Reserved.

This document has been prepared by AECOM Limited (“AECOM”) for sole use of our client (the “Client”) in accordance with generally accepted consultancy principles, the budget for fees and the terms of reference agreed between AECOM and the Client. Any information provided by third parties and referred to herein has not been checked or verified by AECOM, unless otherwise expressly stated in the document. No third party may rely upon this document without the prior and express written agreement of AECOM.

Table of Contents

1.	Introduction	5
1.1	Purpose of this report	5
1.2	Schemes considered in this report.....	6
1.3	Structure of this report	12
2.	Overview of the Schemes	14
2.1	Introduction	14
2.2	Overview of the schemes.....	14
2.3	Main features of the schemes.....	21
2.4	Examination timetables.....	21
3.	Approach taken to coordinate between the projects	23
3.1	Introduction	23
3.2	Collaboration on this report.....	24
3.3	Meetings held and discussion points	24
3.4	Approach to consultation	25
3.5	Collaboration in design: shared grid connection corridor and mitigation measures	28
3.6	Collaboration on access points	30
4.	Shared Development Consent Order Provisions	34
4.1	Introduction	34
4.2	Transfer of benefit provisions.....	36
4.3	Cooperation agreement	36
5.	Shared Mitigation Measures in Draft DCOs	38
5.1	Introduction	38
5.2	Shared grid connection	38
5.3	Cultural heritage	38
5.4	Traffic and transport.....	39
5.5	Ecology	40
6.	Cumulative Impact Assessment.....	41
6.1	Updated information	41
7.	Summary of matters coordinated between NSIPs	43
	Appendix A: Summary of Discussions between Undertakers	44
	Appendix B: Plans Showing Access Locations for the Four Projects	57
	Appendix C: Cooperation Agreement	58
	Appendix D: Cumulative Impacts on Traffic Technical Note	59
	Appendix E: Review of Cumulative Effects	60

Figures

Figure 1.1 DCO Solar Schemes in/near Lincolnshire	7
Figure 2.1 Gate Burton, Cottam, West Burton and Tillbridge Energy Parks: Overview Plan	14
Figure 2.2 Gate Burton, Cottam, West Burton and Tillbridge Energy Parks: Layout Plan	15
Figure 3.1. Gate Burton scheme stage two consultation plan showing shared grid connection corridor. Please note that the content is superseded by application plans	26
Figure 3.2. Consultation plan showing initial layouts of the Gate Burton, Cottam and West Burton schemes. This plan has now been superseded as the schemes have evolved	27
Figure 3.3 Consultation plan used in Tillbridge Consultation showing all four schemes. This plan has now been superseded as the schemes have evolved.	27

Tables

Table 1.1 Versions of the Interrelationships Report and Submission Deadlines	5
Table 1.2 List of NSIP Solar Schemes in and around Lincolnshire	7
Table 1.3 Distance between the solar arrays of the Cottam, West Burton, Tillbridge and Gate Burton schemes	9
Table 2.1 Overview of schemes including details of consenting, construction and operation timetables	17
Table 2.2 Overview of Examination Timetables for the schemes	21

1. Introduction

1.1 Purpose of this report

- 1.1.1 This Report provides information on the interrelationships between the Gate Burton Energy Park, Cottam Solar Project, West Burton Solar Project and Tillbridge Solar Project. The report has been prepared to support the Development Consent Order (DCO) applications for the four projects.
- 1.1.2 An initial version of this Report was prepared to address a request from the Examining Authority (ExA) in the Examination of the application to develop the Gate Burton Energy Park (the “Gate Burton scheme”). Annex G of the Rule 6 letter (issued on 31 May 2023) on the Gate Burton scheme set out a list of additional information that the ExA required to assess the interrelationship between Gate Burton scheme and other Nationally Significant Infrastructure Projects (NSIPs). Annex C of the Rule 6 letter identified five proposed NSIP schemes which are located close to the Gate Burton scheme, being Cottam Solar Project, Tillbridge Solar Project, West Burton Solar Project, Heckington Fen Solar Park and Mallard Pass Solar Project. The Rule 8 letter (issued on 12 July 2023) did not list the NSIP schemes for consideration.
- 1.1.3 A request for the same report was made by the ExA in the Rule 6 letter for the Examination of the Cottam Solar Project (issued on 10 July 2023), with the first iteration of the joint report submitted into the Cottam Solar Project Examination on 17 October 2023. The document was also requested in the Rule 6 letter for the West Burton Solar Project issued on 10 August 2023, with the first iteration originally due on 26 October 2023 and later changed to 24 November 2023.
- 1.1.4 To aid the ExAs, the developers of the Gate Burton, Cottam, West Burton and Tillbridge schemes have agreed to produce one joint version of this report, to be revised and submitted at the various deadlines for each project.
- 1.1.5 For clarity, the versions of the report and the deadlines the report has been submitted at are provided in **Table 1.1** below. This table will be updated as the programmes progress.

Table 1.1 Versions of the Interrelationships Report and Submission Deadlines

Version	Notes	Gate Burton	Cottam	West Burton	Tillbridge
0	Not joint report ¹	D1 (18 July 23)	N/A	N/A	N/A
1	1st joint report	D4 (3 Oct 23)	D1 (17 Oct 23)	N/A	N/A
2	2nd joint report	D5 (20 Nov 23)	D2 (21 Nov 23)	D1 (24 Nov 23)	N/A
3	3rd joint report	D6 (21 Dec 23)	D3 (delayed submission to 21 Dec 23)	D2 (5 Jan 24)	N/A
4	4th joint report	Not submitted as examination finished	D4 (30 January 2024)	N/A	N/A
5	5th joint report	N/A	D5 (27 February 2024)	D4 (4 March 2024)	N/A
6	6th joint report	N/A	Not submitted as examination finished	N/A	Submitted as part of the DCO Application

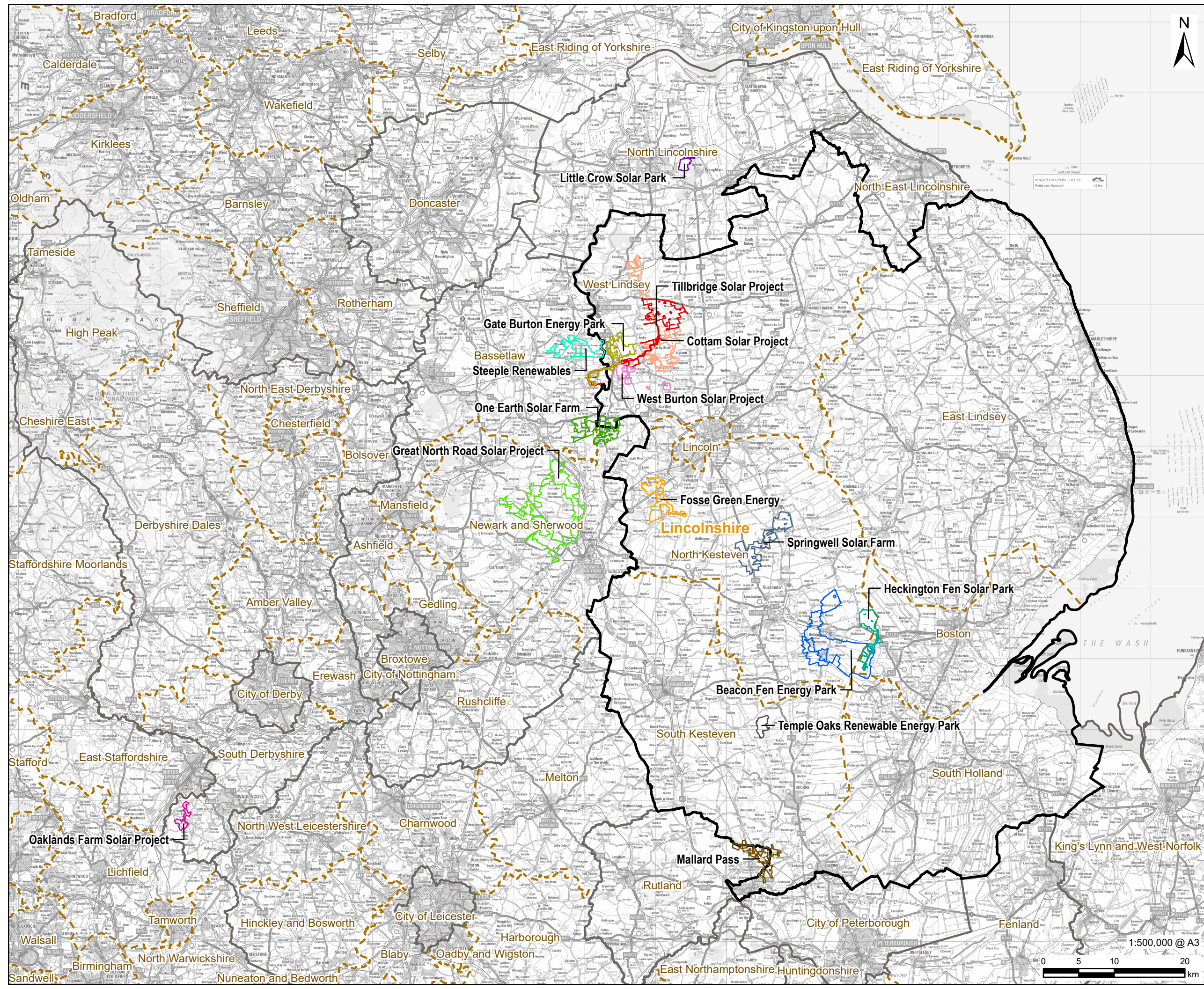
1.1.6 For the reasons identified below, this Report focuses on the interrelationships between the Gate Burton, Cottam, West Burton and Tillbridge schemes. This Report references documents from the applications for all four schemes. For ease, references are provided with the scheme number first (see **Table 2.1**), followed by the application reference in the relevant Examination library if applicable. Where applicable, the document number is also provided for ease of reference.

1.2 Schemes considered in this report

1.2.1 **Figure 1.1** shows the location and Order limits of various proposed NSIP schemes in or near Lincolnshire. **Table 1.2** sets out further details of each of these schemes as of March 2024. The distance provided measures the approximate distance from the project listed under “Scheme Name” to the closest edge of the order limits of either the Cottam, West Burton, Tillbridge or Gate Burton scheme, whichever is the nearest. It should be noted that the Order limits for all projects not yet submitted are evolving and may change over time. The column ‘potential for cumulative effects’ has been populated by the environmental specialists assessing the cumulative impacts of the projects

¹ It should be noted that whilst the first report was prepared for the Gate Burton project and was not a ‘joint report’, it was developed in collaboration with all other parties, with their assistance and input.

on behalf of Gate Burton scheme and has been agreed by the undertakers of the Cottam, West Burton and Tillbridge schemes.



PROJECT
Tillbridge Solar Project

CLIENT
Tillbridge Solar Limited

CONSULTANT
Aldgate Tower
2, Leman Street
London, E1 8FA
United Kingdom
T +44-0207-645-2000

- LEGEND**
- Lincolnshire County Boundary
 - Other County Boundaries
 - District Boundary
 - Solar Scheme**
 - Beacon Fen Energy Park
 - Cottam Solar Project
 - Fosse Green Energy
 - Gate Burton Energy Park
 - Great North Road Solar Project
 - Heckington Fen Solar Park
 - Little Crow Solar Park
 - Mallard Pass
 - Oaklands Farm Solar Project
 - One Earth Solar Farm
 - Springwell Solar Farm
 - Steeple Renewables
 - Temple Oaks Renewable Energy Park
 - Tillbridge Solar Project
 - West Burton Solar Project

NOTES

© Crown copyright and database rights 2024.
Ordnance Survey 0100031673.
© Natural England copyright. Contains Ordnance Survey data © Crown copyright and database right [2023].

All boundaries excluding Gate Burton Energy Park and Tillbridge are indicative.

ISSUE PURPOSE
DCO Submission

PROJECT NUMBER
60677969

FIGURE TITLE
DCO Solar Schemes in/near Lincolnshire

FIGURE NUMBER
Figure 1-1

This drawing has been prepared by the use of AECOM's client. It may not be used, modified, reproduced or relied upon by third parties, except as agreed by AECOM or as required by law. AECOM accepts no responsibility, and denies any liability whatsoever, to any party that uses or relies on this drawing without AECOM's express written consent. Do not scale this document. All measurements must be obtained from the stated dimensions.

Table 1.2 List of NSIP Solar Schemes in and around Lincolnshire

Scheme Name	LPA	Stage of Application	PEIR ² available	ES available	Date Application Submitted/ Due ³	Distance to the nearest edge of Cottam, West Burton, Tillbridge or Gate Burton scheme (whichever is closer) (km)	Potential for cumulative effects
Little Crow Solar Park	North Lincolnshire	Development Consent Granted	Yes	Yes	Dec 2020	8km (to Cottam Scheme)	No
Mallard Pass Solar Farm	Rutland/ South Kesteven	Decision stage	Yes	Yes	Nov 2022	51km (to West Burton Scheme)	No
Heckington Fen Solar Park	North Kesteven/ Boston	Examination	Yes	Yes	Feb 2023	31km (to West Burton Scheme)	No
Springwell Solar Farm	North Kesteven	Pre-application	Yes	No	Q3 2024	20km (to West Burton Scheme)	No
Beacon Fen Energy Park	North Kesteven/ Boston	Pre-application	Yes	No	Q2 2024	31km (to West Burton Scheme)	No
Temple Oaks Renewable Energy Park	South Kesteven	Pre-application	No	No	No timescale available	38km (to West Burton Scheme)	No
Oaklands Farm Solar Project	South Derbyshire (Derbyshire)	Examination	Yes	Yes	Autumn 2023	67km (to Gate Burton Scheme)	No

² Preliminary Environmental Information Report, an environmental report on potential effects produced for statutory consultation on a NSIP.

³ Due dates are as stated on the National Infrastructure Planning website.



Scheme Name	LPA	Stage of Application	PEIR ² available	ES available	Date Application Submitted/ Due ³	Distance to the nearest edge of Cottam, West Burton, Tillbridge or Gate Burton scheme (whichever is closer) (km)	Potential for cumulative effects
Fosse Green	North Kesteven	Pre-application	No	No	Q4 2024	7km (to West Burton Scheme)	No
One Earth Solar Farm	West Lindsey/ Bassetlaw	Pre-application	No	No	Q1 2025	3.5km (to West Burton Scheme)	Yes (except Tillbridge)
Steeple Renewables Project	Bassetlaw	Pre-application	No	No	Q1 2025	0km (to West Burton, assuming the Order limits for West Burton and Steeple will overlap at the Substation). 1.2 km to the nearest solar panel area, being the panels in the north east of the Solar and Energy Storage area of the Gate Burton scheme.	Cannot be confirmed
Great North Road Solar Park	Newark and Sherwood District Council	Pre-application	No	No	Q2 2025	10km (to West Burton scheme)	Yes (except Tillbridge)

1.2.2 **Table 1.3** below provides details of the distances (and direction) between the solar arrays for the Cottam, West Burton, Tillbridge and Gate Burton schemes. The distance between solar arrays is measured at the nearest point to the other relevant scheme and the direction means the direction from the scheme named horizontally at the top of the table (e.g. the solar arrays for Cottam scheme are 1.7km north from the solar arrays for the West Burton scheme at their nearest point). Each of the four schemes is considered to have the potential for cumulative impacts on the others, based on an assessment by the Gate Burton scheme’s environmental specialists which has been agreed by the undertakers of the Cottam, West Burton and Tillbridge schemes.

Table 1.3 Distance between the solar arrays of the Cottam, West Burton, Tillbridge and Gate Burton schemes

Scheme Name	Cottam	West Burton	Gate Burton	Tillbridge
Cottam	0km	1.70km (north)	1.42km (east)	0.70km (south)
West Burton	1.70km (south)	0km	0.87km (south)	6.5km (south-west)
Gate Burton	1.42km (west)	0.87km (north)	0km	4.28km (south-west)
Tillbridge	0.70km (north)	6.5km (north-east)	4.28km (north-east)	0km

1.2.3 This Report discusses the interrelationships between the Gate Burton, Cottam, West Burton and Tillbridge schemes, because these are the projects with the potential for cumulative effects, as well as being those geographically closest to each other (although please note comments below on Steeple Renewables Project). These schemes also share common features, including a shared cable route corridor. The projects are being developed by different developers who have been working together to improve the schemes and reduce environmental effects.

1.2.4 The Report does not focus on the other schemes listed above because they are located some distance from the Gate Burton, Cottam, West Burton and Tillbridge schemes and/or do not share the same common features. In particular, Heckington Fen and Mallard Pass solar projects listed in the Gate Burton Rule 6 letter are over 30km from the Gate Burton, Cottam, Tillbridge and West Burton schemes so there is no potential for cumulative effects.

1.2.5 **Table 1.2** is being continually updated and so includes projects that have only been announced very recently. As shown above, many projects are at such an early stage that no statutory consultation has yet been undertaken and no Preliminary Environmental Information Report produced.

1.2.6 For all projects listed in **Table 1.2**, except Steeple Renewables, One Earth Solar Farm and Great North Road Solar Park, cumulative effects can nevertheless be ruled out due to large separation distances.

- 1.2.7 Steeple Renewables Project is located in close proximity to the four projects in this report and therefore cumulative effects cannot be ruled out at this stage. The Steeple Renewables Project proposes up to 400MW of solar energy generation and 200MW of battery storage. It is proposed to connect at the former West Burton Power Station site, as does the West Burton Solar project.
- 1.2.8 Steeple Renewables Project was announced on 23 October 2023 and only very high level information is available. No Scoping Report has yet been produced, and there is no Preliminary Environmental Information Report and no Environmental Statement available. It is therefore not possible to carry out a meaningful environmental assessment of the cumulative effects between the projects due to a lack of design and environmental information to feed into the assessment.
- 1.2.9 Given the early stage of design, there is also uncertainty on the design and significant potential for the project to evolve over time. For example, the distances provided in **Table 1.2** are based on the distance between the Gate Burton project (as the closest solar array of the four projects) and the 'land under consideration' for the Steeple Renewable Project. However, at present it is not known whether the 'land under consideration' would be used for solar panels, battery storage, access tracks or environmental mitigation planting, which would make any assessment of cumulative effects very uncertain. Given that full details are available for Gate Burton, Cottam and West Burton and will shortly be available for Tillbridge, it is also considered highly likely that the developer of the Steeple Renewables project will evolve the scheme design to minimise cumulative impacts.
- 1.2.10 Scoping Reports for One Earth Solar Farm and Great North Road Solar Park were both submitted to the Planning Inspectorate in November 2023. The potential cumulative effects of these two schemes are considered in a Technical Note on Cumulative Effects of Additional Schemes **[EN010133/EX4/C8.2.11]** that was submitted to the Cottam Solar Project Examination at Deadline 4 and in an equivalent document **[EN010132/EX4/C8.2.5]** that was submitted to the West Burton Solar Project Examination at Deadline 4.
- 1.2.11 The potential for cumulative effects with the above schemes is also assessed within **Chapter 18: Cumulative Effects and Interactions** of the Environmental Statement for the Tillbridge Solar Project **[EN010142/APP/6.1]**.

1.3 Structure of this report

- 1.3.1 In line with the requirements in Annex G of the Gate Burton scheme Rule 6 letter, Annex G of the Cottam Rule 6 letter and Annex G of the West Burton Rule 6 letter, this Report comprises the following sections:
- a. **Section 2** provides an overview of the Gate Burton, Cottam, Tillbridge and West Burton schemes, including details on timings, construction phasing, grid connection and start of operation. This is accompanied by figures showing the Order limits for the projects. The plans show the locations of the main features of each project, including solar arrays, energy storage facilities, substations, electrical cable routes, grid

connections, environmental mitigation areas, temporary construction and decommissioning areas, and construction haulage routes.

- b. **Section 3** outlines the approach taken by the project promoters to work collaboratively with one another.
- c. **Section 4** outlines the DCO provisions required to be implemented satisfactorily in relation to other projects.
- d. **Section 5** outlines the mitigation measures that are shared between the projects.
- e. **Section 6** sets out information on the other projects relied upon for the cumulative impact assessments, the level of detail, and any other changes since the submission of applications.
- f. **Section 7** provides a summary of the matters coordinated with other projects, setting out the matters that have been agreed and further work being undertaken jointly between the projects.

2. Overview of the Schemes

2.1 Introduction

2.1.1 This section provides an overview of the Gate Burton, Cottam, West Burton and Tillbridge schemes including details on timings, construction phasing, grid connection and start of operation. It is accompanied by **Figures 2.1 and 2.2** which show the locations of the main features of each project, including solar arrays, energy storage facilities, substations, electrical cable routes, grid connections, environmental mitigation areas, temporary construction areas, and construction haulage routes.

2.2 Overview of the schemes

2.2.1 All four schemes are proposals for solar energy parks that would deliver electricity to the national electricity transmission network. They involve the construction, operation, maintenance and decommissioning of solar photovoltaic (PV) electricity generating facilities and energy storage facilities with total capacities exceeding 50 megawatts and electrical connections to the National Grid via existing substations. Each scheme is distinct and is being promoted by a different undertaker.

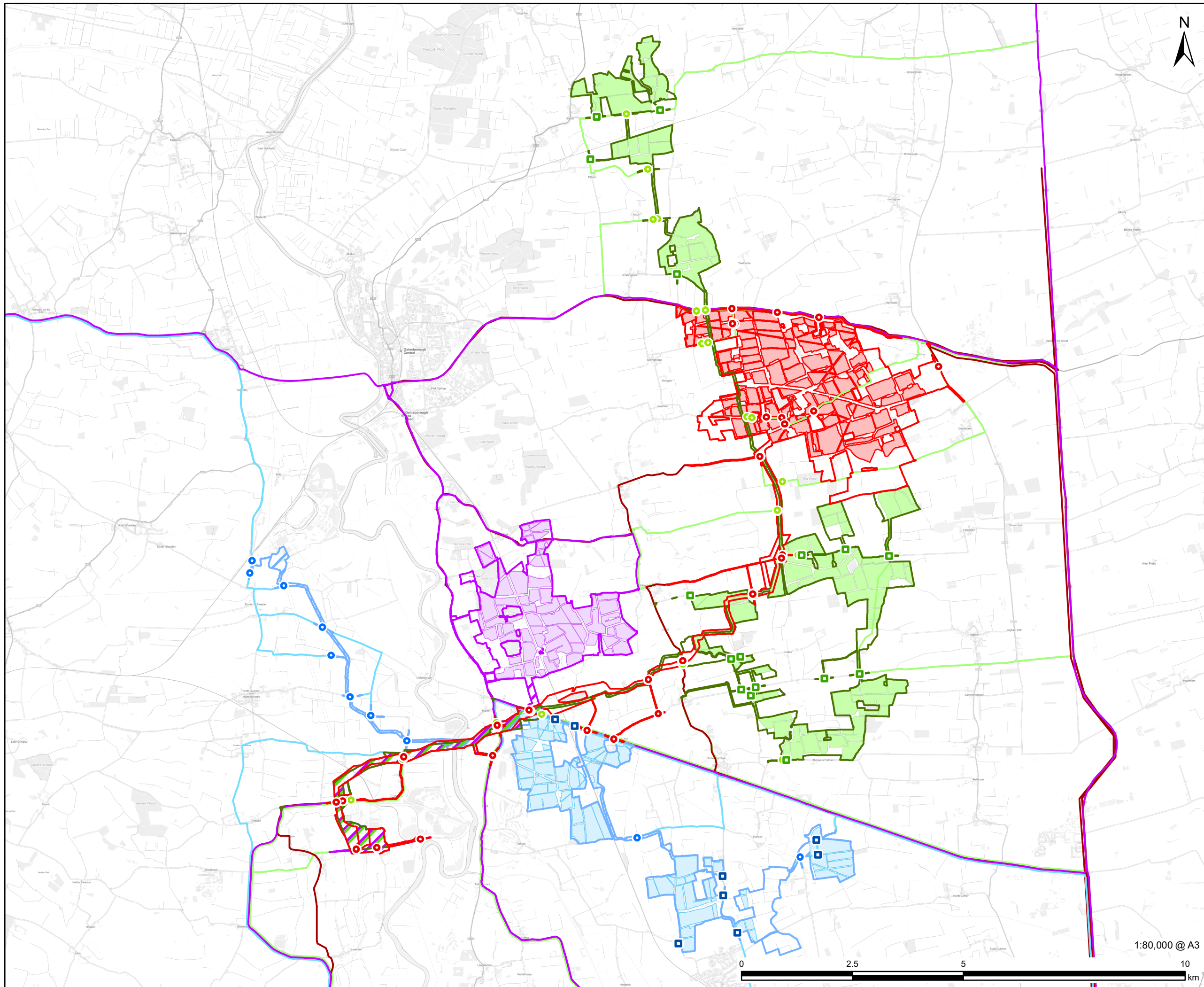
2.2.2 The Gate Burton scheme is a proposal for a solar PV park with a capacity of approximately 531MW together with a battery energy storage system, promoted by Gate Burton Energy Park Limited (the “Gate Burton undertaker”), which is part of Low Carbon Limited. It is located to the east of the River Trent between the villages of Knaith, Gate Burton and Willingham by Stow. The electricity generated will be transferred by an underground 400kW cable to the grid connection substation at Cottam Power Station to the south-west. The DCO application was submitted by the Gate Burton undertaker to the Planning Inspectorate (PINS) on 27 January 2023 and accepted for Examination on 22 February 2023. Examination commenced on 4 July 2023 and closed on 4 January 2024.

2.2.3 Cottam Solar Project (the “Cottam scheme”) is being promoted by Cottam Solar Project Limited (the “Cottam undertaker”), which is part of Island Green Power UK Limited. The Cottam scheme is a proposed solar farm across four areas of land connected by underground cable with a capacity of approximately 600MW together with a battery energy storage system. Two of the areas of the Cottam scheme containing solar panels are located between the villages of Willingham by Stow, Thorpe le Fallows and Fillingham. The other two areas are located further north around Blyton, Pilham and Corringham. The electricity generated will be transferred to the grid via a substation at Cottam Power Station. The DCO application was submitted to PINS on 12 January 2023 and accepted for Examination on 10 February 2023. Examination commenced on 5 September 2023 and closed on 5 March 2024.

West Burton Solar Project (the “West Burton scheme”) is being promoted by West Burton Solar Project Limited (the “West Burton undertaker”), which is also part of Island Green Power. It is a proposal for a solar PV park across three areas of land connected by underground cable, with a capacity of approximately 480MW together with a battery energy storage system. The

areas of the West Burton scheme siting solar panels are located south of the A1500 around the villages of Marton, Ingleby and Bransby. The electricity generated will be transferred to the grid via a substation at West Burton Power Station. The DCO application was submitted to PINS on 21 March 2023 and accepted for Examination on 18 April 2023. The Examination commenced on 8 November 2023.

- 2.2.4 Tillbridge Solar Project (the “Tillbridge scheme”) is being promoted by Tillbridge Solar Limited (the “Tillbridge undertaker”) and is a joint venture between Tribus Clean Energy Limited and Recurrent Energy. Tillbridge Solar Limited. The Tillbridge scheme has secured a Bilateral Connection Agreement (BCA) with National Grid to allow 500MW of renewable energy to be transferred into and out of its substation. The proposed solar farm is located between Springthorpe and Glentworth. The electricity generated will be transferred to the grid via a substation at Cottam Power Station (National Grid Cottam Substation). This report forms part of the DCO Application submission for the Tillbridge scheme.
- 2.2.5 The main scheme components for all four schemes comprise: PV tables (mounting structures) and panels; inverters; transformers; an on-site Substation (two in the case of the Tillbridge scheme); onsite cabling; a Battery Storage and Energy Storage System (BESS) (or multiple in the case of the Tillbridge scheme); a 400kV electrical connection to the National Grid Substation at Cottam Power Station (for the Gate Burton, Cottam and Tillbridge schemes) and the National Grid Substation at West Burton Power Station (for the West Burton scheme); fencing and security measures; access tracks; and landscaping and biodiversity enhancement.
- 2.2.6 Designing the schemes has been an iterative process, guided by environmental assessments and consultation with statutory and non-statutory consultees. A number of the design aspects of the schemes cannot be confirmed until the tendering process for design and construction has been completed. Therefore, whilst this Report (and the applications for development consent) gives as much detail as possible on proposed design and construction for the schemes, the final design and construction processes are to be determined. For the purposes of applying for development consent, the designs are considered in line with the principles of the “Rochdale Envelope” to present a likely worst-case assessment of potential environmental effects of the schemes where the design details cannot yet be fixed.
- 2.2.7 **Table 2.1** sets out the key details for each of the schemes including details on the estimated timetable of works such as obtaining consent, construction phasing, grid connection and operational commencement. Given that no project yet has consent, all timescales are indicative and subject to change over time.



- LEGEND**
- Tillbridge Solar Project**
- Order limits
 - Solar Arrays
 - Access Location
 - Construction Route
- Cottam Solar Project**
- Order limits
 - Solar Arrays
 - Grid Connection Corridor
 - Construction Access
 - Cable Route Access
 - Construction Route
- Gate Burton Energy Park**
- Order limits
 - Solar Arrays
 - Grid Connection Corridor
 - Construction Route
- West Burton Solar Project**
- Order limits
 - Solar Arrays
 - Grid Connection Corridor
 - Construction Access
 - Cable Route Access
 - Construction Route

NOTES

© Crown copyright and database rights 2024.
Ordnance Survey 0100031673.
© Natural England copyright. Contains
Ordnance Survey data © Crown copyright
and database right [2023].

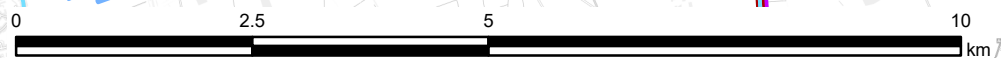
ISSUE PURPOSE
DCO Submission

PROJECT NUMBER
60677969

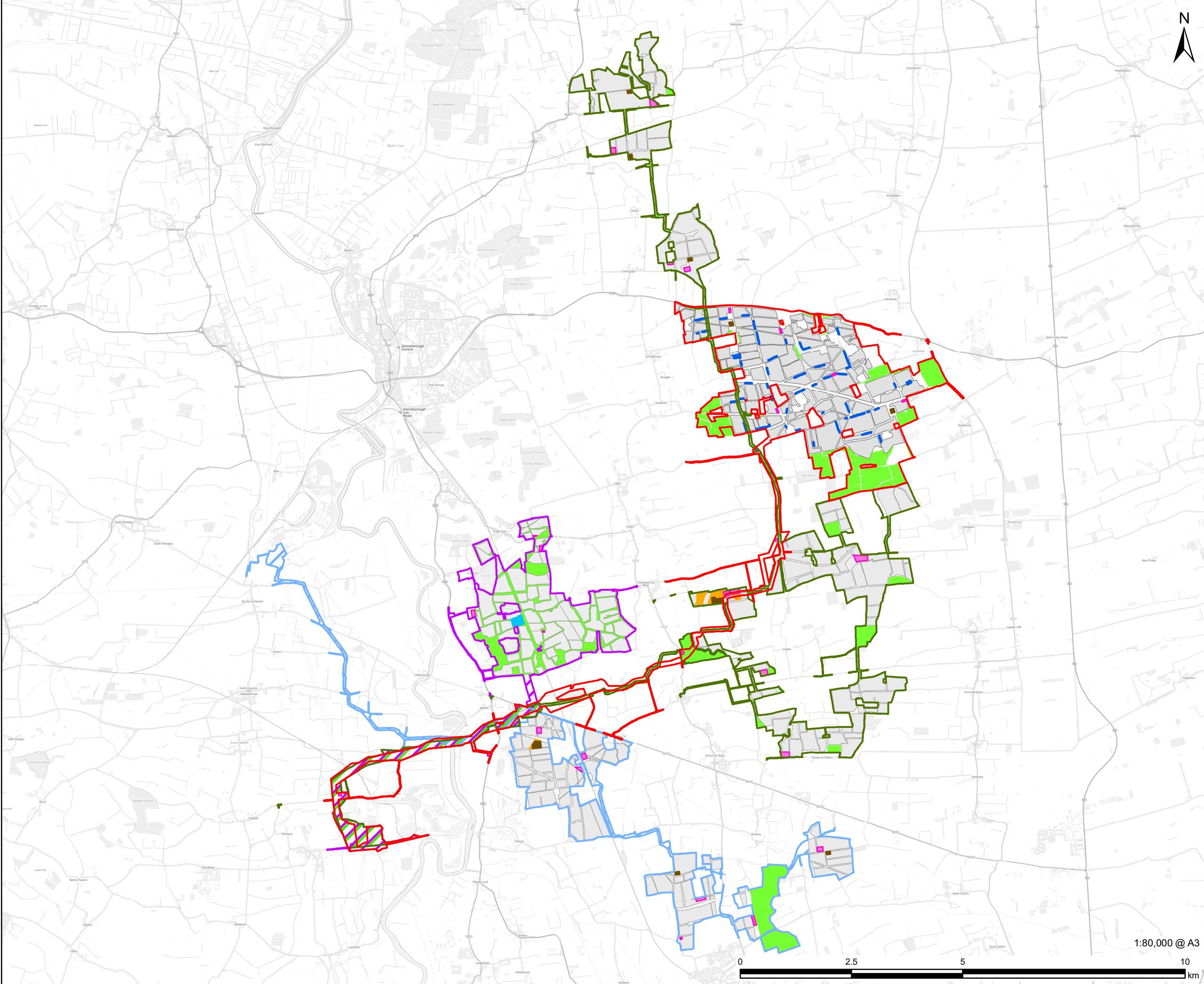
FIGURE TITLE
Tillbridge, Gate Burton, Cottam and
West Burton Solar Projects: Overview

FIGURE NUMBER
Figure 2-1

1:80,000 @ A3



This drawing has been prepared for the use of AECOM's client. It may not be used, modified, reproduced or relied upon by third parties, except as agreed by AECOM or as required by law. AECOM accepts no responsibility, and denies any liability whatsoever, to any party that uses or relies on this drawing without AECOM's express written consent. Do not scale this document. All measurements must be obtained from the stated dimensions.



LEGEND

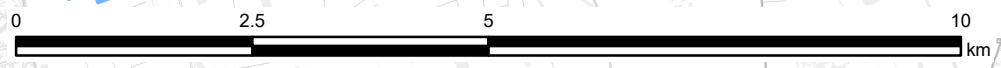
- Tillbridge Solar Project**
 - Order limits
- Cottam Solar Project**
 - Order limits
 - Grid Connection Corridor
- Gate Burton Energy Park**
 - Order limits
 - Grid Connection Corridor
- West Burton Solar Park**
 - Order limits
 - Grid Connection Corridor
- Indicative Infrastructure**
 - Solar Arrays
 - Substation
 - Battery Energy Storage Systems (BESS)
 - Battery Energy Storage Systems (BESS) and Solar Station
 - Battery Storage
 - Environmental Mitigation
 - Construction compound

NOTES
© Crown copyright and database rights 2024.
Ordnance Survey 0100031673.
© Natural England copyright. Contains
Ordnance Survey data © Crown copyright
and database right [2023].

ISSUE PURPOSE
DCO Submission
PROJECT NUMBER
60677969

FIGURE TITLE
Tillbridge, Gate Burton, Cottam and
West Burton Solar Projects: Indicative
Layout Plan

FIGURE NUMBER
Figure 2-2



This drawing has been prepared for the use of AECOM's client. It may not be used, modified, reproduced or relied upon by third parties, except as agreed by AECOM or as required by law. AECOM accepts no responsibility, and denies any liability whatsoever, to any party that uses or relies on this drawing without AECOM's express written consent. Do not scale this document. All measurements must be obtained from the stated dimensions.



Table 2.1 Overview of schemes including details of consenting, construction and operation timetables

Project detail/date	Gate Burton Energy Park	Cottam Solar Project	West Burton Solar Project	Tillbridge Solar Project
Planning Inspectorate Project Number	EN010131	EN010133	EN010132	EN010142
Approximate solar MW capacity	531 MW	600 MW	480 MW	500 MW connection agreement.
Approximate battery storage capacity	500 MWh	Two options have been assessed for the Environmental Statement: Option A: 1357MWh Option B: 2773MWh	159MWh	Subject to detailed design.
Order Limits (ha)	824 ha, including 652 ha for Solar and Energy Storage Park and 172 ha for Grid Connection Corridor.	1,451.23 ha. The four combined sites minus the Cable Corridors, means of access and Cottam 1 permissive path total 1188.5 2ha.	886.42 ha. The three combined sites minus the Cable Corridors, but including means of access total 769.1ha.	Approximately 1,350 ha for solar and BESS (Principal Site), of which approximately 800ha is developable and 550ha is for ecological, landscape and heritage offsets. Additional area for cable corridor.
Local Authority Areas covered by scheme	Lincolnshire County Council, Nottinghamshire County Council, West Lindsey District Council and Bassetlaw District Council.	Lincolnshire County Council, Nottinghamshire County Council, West Lindsey District Council and Bassetlaw District Council.	Lincolnshire County Council, Nottinghamshire County Council, West Lindsey District Council and Bassetlaw District Council.	Lincolnshire County Council, Nottinghamshire County Council, West Lindsey District Council and Bassetlaw District Council.



Project detail/date	Gate Burton Energy Park	Cottam Solar Project	West Burton Solar Project	Tillbridge Solar Project
Submission of application	27 January 2023	12 January 2023	21 March 2023	April 2024
Start of Examination (actual/predicted)	4 July 2023	5 September 2023	8 November 2023	Q3 2024
Due date for decision	4 July 2024	5 September 2024	Q4 2024	Q3 2025
Predicted start of construction	Q1 2025	Q4 2024 (earliest possible date)	Q4 2024 (earliest possible date)	Q4 2025
Details of construction phases and any shared construction timetable/ shared works with other schemes.	<p>The main construction phase is predicted to be 24-36 months between 2025 and 2027, with construction peak in 2026.</p> <p>A list of key construction activities is included in Chapter 2: the Project of the Environmental Statement [EN010131/APP-011/3.1].</p>	<p>The main construction phase is predicted to be 24 months between, at the earliest, 2024 and 2026.</p> <p>A list of key construction activities is included in Chapter 4: Scheme Description of the Environmental Statement [EN010133/REP-012].</p>	<p>The main construction phase is predicted to be 24 months between, at the earliest, 2024 and 2026.</p> <p>A list of key construction activities is included in Chapter 4: Scheme Description of the Environmental Statement [EN010132/APP-42].</p>	<p>The main construction phase is predicted to be 24-36 months, starting at the earliest in late 2025, with construction peak in 2026.</p> <p>A list of key construction activities is included in Chapter 3: Scheme Description of the Environmental Statement [EN010142/APP/6.1].</p>
Predicted end of construction	Q4 2027/Q1 2028	Q4 2026 (earliest possible date)	Q4 2026 (earliest possible date)	Q4 2027



Project detail/date	Gate Burton Energy Park	Cottam Solar Project	West Burton Solar Project	Tillbridge Solar Project
Predicted Operation Date	Q4 2028	Q3 2029 (with potential for an earlier date to be achieved)	Q4 2028 (with potential for an earlier date to be achieved)	Q1 2028

2.3 Main features of the schemes

- 2.3.1 **Figure 2.1** provides an overview of the four schemes, including the main solar areas, cable route corridors and main routes for heavy goods vehicles. Information on this plan has been limited so the main areas can be seen clearly. **Figure 2.2** provides more detail on the proposed indicative layouts for each scheme including solar arrays, energy storage facilities, substations, electrical cable routes, grid connections, environmental mitigation areas, temporary construction areas, and construction haulage routes.
- 2.3.2 The Gate Burton, West Burton and Cottam schemes each have main battery storage areas as shown in **Figure 2.2**. Tillbridge has taken a different approach, with the scheme being DC-coupled with batteries located in individual containers or housed within a larger building or buildings, typically coming in containerised solutions dispersed across the scheme's principal site. The precise number of individual battery storage containers will depend upon the level of power capacity and duration of energy storage that each project will require and work is ongoing to determine this. The areas shown as 'BESS and solar stations' in **Figure 2.2** for Tillbridge are distributed across the scheme's principal site and located alongside the solar stations. Solar stations comprise a DC/AC inverter and a LV/MV transformer, including switchgear with these areas not used solely for battery storage.
- 2.3.3 As can be seen from **Figure 2.1**, the construction haulage routes for the Gate Burton scheme follow a range of routes including the A156 north-south corridor, A1500 east-west corridor and routes further afield including the A57 (accessed via the A156 to the south), the A631 to the east and west, and the A15 to the north and south. This similarly applies to the other three solar projects, although these tend to be more focussed on the A15, A1500 and A631. In terms of construction vehicle routing overlaps between the four projects, these mainly include the A15 (with traffic predominantly serving the Cottam scheme), the A1500 (predominantly serving the West Burton scheme), the A631 (predominantly serving the Tillbridge scheme) and the A156 (predominantly serving the Gate Burton scheme). The construction haulage route for the Cottam scheme is slightly more complex because of the geographical split between the different areas that make up the project. All projects have additional accesses off smaller roads for both the solar array areas and the cable route corridor. For all projects traffic is concentrated in the construction periods, with limited operational traffic.
- 2.3.4 Section 3.6 of this Report provides more detail on collaboration on access points and design for the four projects.

2.4 Examination timetables

- 2.4.1 **Table 2.2** sets out the key dates in the examinations for the Cottam, West Burton and Gate Burton schemes, as per the Rule 6 letters for each scheme. The table includes the details from the Rule 8 letter for West Burton as published on 16 November 2023. The examination timetable for the Tillbridge scheme has not yet been set (predictions for general dates are included in **Table 2.1** above). Therefore, the Tillbridge scheme has not been included in the programme below.

3. Approach taken to coordinate between the projects

3.1 Introduction

- 3.1.1 This section describes the ways in which the undertakers of the Gate Burton, Cottam, West Burton and Tillbridge schemes collaborated when designing the schemes, making applications and through the Examination periods.
- 3.1.2 The Gate Burton, West Burton and Cottam schemes are all on similar timelines and significant work has been undertaken to minimise cumulative impacts associated with the projects. This includes devising a shared cable route corridor, adopting similar methodologies for the environmental assessment and managing consultation periods in a way that reduces confusion for communities and stakeholders. Due to the differences in projects, locations and teams, environmental assessment methodologies are similar but not always identical. The aim of this collaboration is to reduce overall environmental and social effects of the schemes, particularly on communities close to the cable route corridor and sensitive heritage and ecological receptors close to the River Trent. Further details of the meetings that have taken place to co-ordinate scheme development are detailed below.
- 3.1.3 The Tillbridge scheme is at an earlier stage in the DCO process than the Gate Burton, Cottam and West Burton schemes. The Gate Burton, West Burton and Cottam schemes had Preliminary Environmental Information Reports (PEIR) available for those three projects when preparing their respective Environmental Statements. In contrast, no PEIR was available at the time for the Tillbridge scheme as the project did not commence Statutory Consultation until the end of May 2023. This was after the other three applications had been submitted. Cumulative impacts for Tillbridge were therefore considered using the Tillbridge Scoping Report. As set out in Chapter 6 of this report, the cumulative impact assessments for the Cottam, West Burton and Gate Burton schemes have been revisited as further information has become available. Chapter 18: Cumulative Effects and Interactions of the Environmental Statement **[EN010142/APP/6.1]** for the Tillbridge scheme provides an updated cumulative effects assessment, considering latest published information across all four projects.
- 3.1.4 Since the applications for the first three projects have been submitted, the undertakers of the Gate Burton, West Burton and Cottam schemes have agreed to enter into reciprocal protective provisions, as detailed further in Section 4. The three projects also included draft protected provisions for Tillbridge in their draft DCOs so they could be included when the DCO application for Tillbridge was submitted.
- 3.1.5 Reciprocal protective provisions have been included within the draft DCO for the Tillbridge Solar Project **[EN010142/APP/3.1]** for the other three projects.

3.2 Collaboration on this report

- 3.2.1 The undertakers of all four schemes have worked collectively to produce this Report. Information and GIS data from the undertakers of all four schemes has been combined in order to compile:
- Table 2.1** outlining the key features of each scheme including timings, construction phasing, grid connection and operation commencement; and
 - Figures 2.1 and 2.2** showing the interrelationship between the schemes on the ground.
- 3.2.2 The first version of this report (version 0) was submitted at Deadline 1 in the Gate Burton scheme Examination (18 July 2023). All undertakers were provided with a draft report prior to that deadline in order to review and check the accuracy of information provided on their specific schemes, and all provided comments that were incorporated prior to submission. Subsequent versions have similarly been reviewed and approved by all undertakers prior to submission.
- 3.2.3 Chapter 6 of the first version of the Report (version 0) describes the process the Gate Burton scheme team has undertaken to confirm whether any changes to cumulative effects occur due to further information being available on all schemes.
- 3.2.4 All four undertakers have worked together to produce the joint version of the Report (i.e. version 1 and all subsequent versions), including an updated cumulative assessment at Chapter 6 and the associated Cumulative Effects Table at **Appendix E**.

3.3 Meetings held and discussion points

- 3.3.1 The undertakers of the Gate Burton, Cottam, West Burton and Tillbridge schemes have met regularly to discuss areas of collaboration and co-ordination between the schemes. These meetings initially took place between the Gate Burton, Cottam and West Burton Schemes and have widened to include the Tillbridge project as it developed.
- 3.3.2 The undertakers of the Gate Burton, Cottam and West Burton schemes have collaborated from an early stage when approaching landowners regarding their proposals. This included joint landowner engagement for early non-intrusive surveys. Depending on the activities being undertaken, meetings were held on a fortnightly or monthly basis between communications teams, heritage teams and environmental leads. A list of meetings held between parties is provided in **Appendix A**, although informal engagement has also been held outside these scheduled meetings and site visits. Joint working with landowners has also been progressing with Tillbridge since the scheme has been announced publicly. Data is also being shared between teams to avoid the need to repeat surveys for areas affected by more than one project, particularly the shared cable route corridor.
- 3.3.3 At all stages of the projects, the land referencing teams engaged landowners on behalf of each project but, through collaboration, opportunities were found to engage with landowners about all projects, particularly in the shared cable route corridor. For example, the Gate Burton, Cottam and West Burton

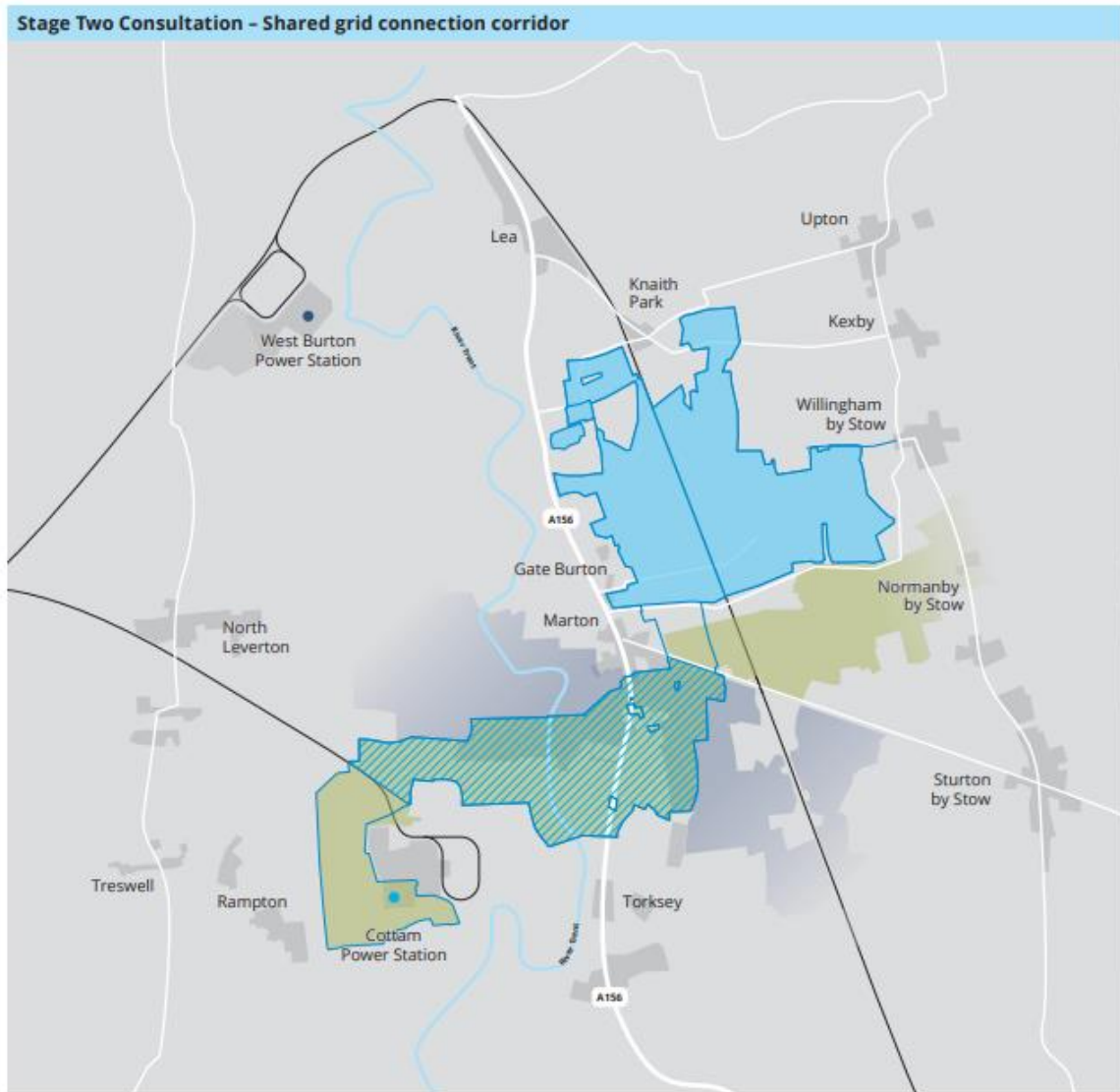
schemes took a joint approach to archaeological geophysical surveys and the four projects have shared trial trenching results in the shared cable route corridor. This reduced the number of times surveyors were accessing the same land parcels and disruption to landowners, as well as enabling sharing of survey costs.

- 3.3.4 There has also been extensive collaboration between the Gate Burton, Cottam and West Burton schemes in the preparation of Environmental Statements, including discussions on survey methodologies, viewpoints and assessment of individual and cumulative effects.
- 3.3.5 The Gate Burton, West Burton and Cottam schemes have also worked together to identify and agree the shared cable corridor and submitted cable corridors that are almost identical in the shared area. Collaboration and joint working with Tillbridge with respect to the design iteration of its cable route corridor has also been undertaken, with all four developers working together to achieve a shared corridor as much as possible and to minimise environmental effects. The undertakers continue to collaborate as four projects to identify further ways to reduce impacts where possible, for example, through examining access routes, the use of shared haul roads and on planned consultation. Further detail on these areas of collaboration is provided below.

3.4 Approach to consultation

- 3.4.1 In application preparation and during consultation, the Gate Burton, Cottam and West Burton undertakers cooperated with each other to ensure clear communication and to distinguish between the projects. The consultations opened and closed on different dates and events were held over different periods, with regular collaboration ensuring this was the case. This coordination allowed the local community the opportunity to attend events for each of the projects and to have sufficient time to provide feedback. Similar conversations were undertaken with Tillbridge Solar in the timing of both their non-statutory and statutory consultation periods to avoid clashes.
- 3.4.2 Maps and plans were created to show the shared aspect of the schemes to ensure those attending consultation events understood the scheme under discussion and how it related to the other two schemes. For the Gate Burton scheme, this included the map at **Figure 3.1** below showing the shared cable route corridor. A map was also created showing the layouts of the Gate Burton, Cottam and West Burton schemes (see **Figure 3.2**) to assist understanding of how the projects related to one another and enable understanding of potential cumulative effects. The same plan was used in the West Burton and Cottam schemes' statutory consultation events to ensure this information was shared with all attendees. Tillbridge Solar was not included on the maps as they were created before the Tillbridge scheme launched publicly, however, Tillbridge used a similar plan which provided details of all four schemes in its consultation documents (see **Figure 3.3**).

Figure 3.1 Gate Burton scheme stage two consultation plan showing shared cable route corridor. Please note that the content is superseded by application plans.



Key

Low Carbon:

- Gate Burton Energy Park site
- Gate Burton Energy Park connection corridor
- Shared connection corridor area

Island Green Power:

- Cottam Solar Project connection corridors
- West Burton Solar Project connection corridors

Figure 3.2 Consultation plan showing initial layouts of the Gate Burton, Cottam and West Burton schemes. This plan has now been superseded as the schemes have evolved.

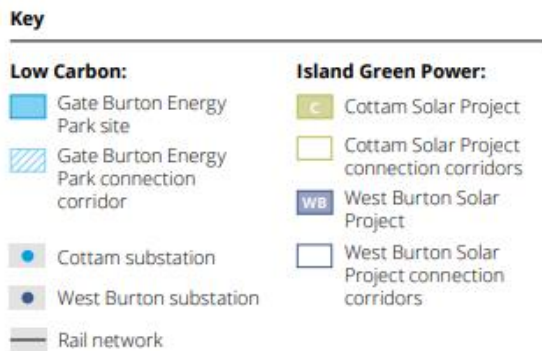
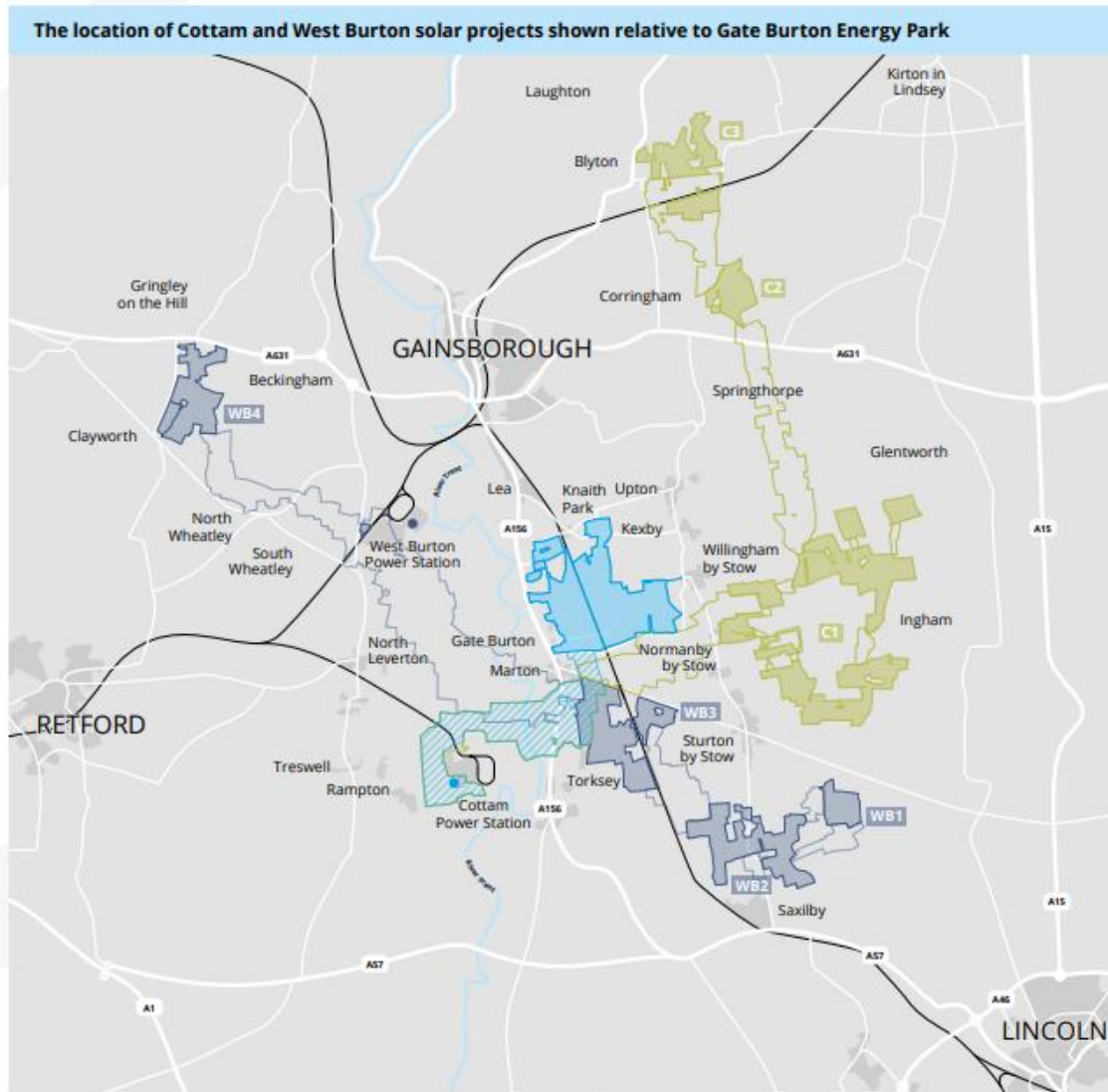
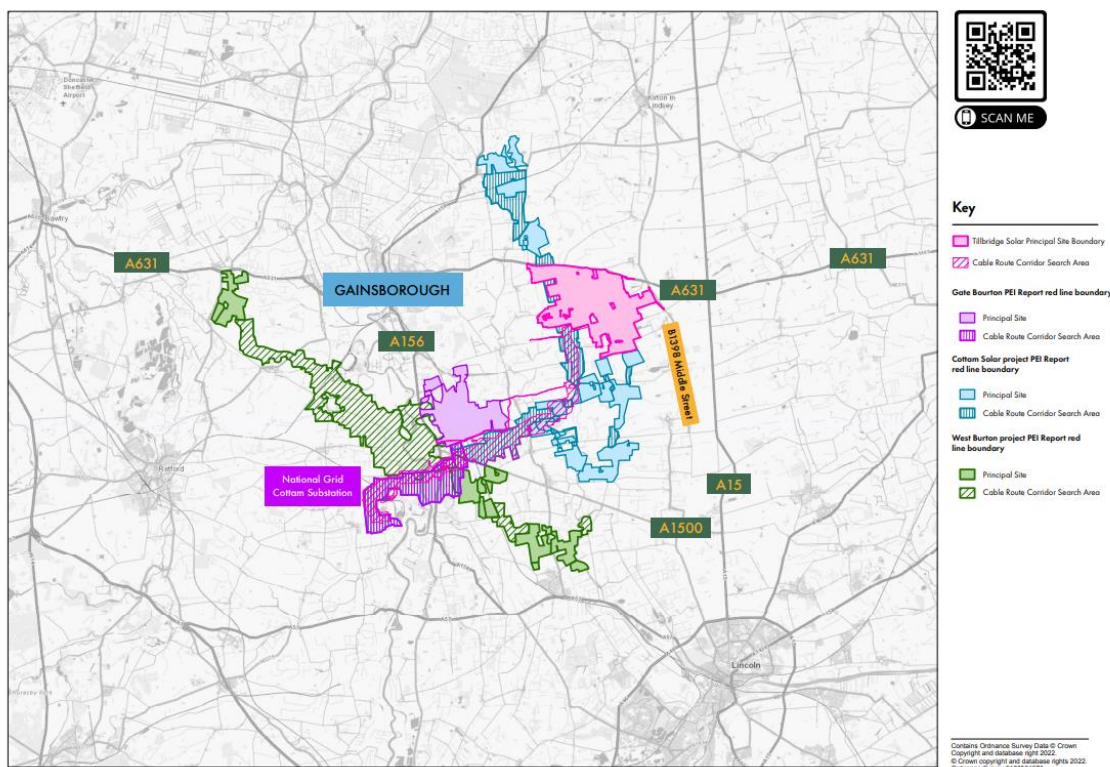


Figure 3.3 Consultation plan used in Tillbridge Consultation showing all four schemes. This plan has now been superseded as the schemes have evolved.



3.4.3 Regular meetings were held between the consultation teams for each project to ensure messaging was consistent and that communications were being delivered in a way that defined the individual projects, while acknowledging the cumulative impacts. All teams were aware of the events being held by the other projects and were ready to provide information about events on other projects when asked. Whilst inevitably there were individuals who requested clarification on the project being considered at events, in the experience of all four developers, attendees were generally aware of the project under consideration and the others in the area.

3.5 Collaboration in design: shared cable route corridor and mitigation measures

3.5.1 The undertakers for the Gate Burton, West Burton, Cottam and Tillbridge schemes also worked collaboratively on design development and environmental avoidance/mitigation to reduce overall environmental and social effects. In particular, the scheme developers have worked together to reduce the impact on communities living in close proximity to the shared cable route corridor and on known ecological and archaeologically sensitive areas adjacent to the River Trent, including the Viking Great Army Winter Camp (ML1125067) on the eastern side of the River Trent (refer to Chapter 7: Cultural Heritage of the Gate Burton ES [EN010131/APP-016/3.1]), Chapter 13 Cultural Heritage of the Cottam ES [EN010133/APP-048], Chapter 13 Cultural Heritage of the West Burton ES [EN010132/APP-051]) and Chapter 8 Cultural Heritage of the Tillbridge ES [EN010142/APP/6.1].

- 3.5.2 The shared cable route corridor (see area 4b in the Gate Burton **Works Plans [EN010131/CR1-009/5.2]**, Work package 6B on the Cottam Works Plan **[EN010133/EX4/C2.4_C]**, Works package 5B on the West Burton Works Plan **[EN010132/REP1-004]**) and Work No. 4C, 4D and 4E on Tillbridge Works Plan **[EN010142/APP/2.3]** comprises an area within which the Gate Burton undertaker, the Cottam undertaker and the Tillbridge undertaker will all locate their connections to Cottam substation; and, in part, the West Burton undertaker will locate its connection to West Burton substation. The shared cable route corridor is further defined within Chapter 5: EIA Methodology of the Gate Burton ES **[EN010131/REP4-007/3.1]**, Chapter 2 EIA Process and Methodology of the Cottam ES **[EN010133/APP-037]**, Chapter 2 EIA Process and Methodology of the West Burton ES **[EN010132/APP-040]**) and Figure 4-6: Shared Cable Route Corridor of the Tillbridge ES **[EN010142/APP/6.3]**, with the cumulative effects and respective environmental mitigation reported within each of the topic chapters and Chapter 18: Cumulative Effects and Interactions of the Tillbridge ES **[EN010142/APP/6.1]**.
- 3.5.3 Shared mitigation measures include excavation and recording (strip, map and record) of archaeological remains in advance of construction activities for cultural heritage within the shared cable route corridor. Shared mitigation measures for ecology include joint mitigation to be undertaken with the Cottam and West Burton schemes within the shared cable route corridor and this will be outlined in the detailed Construction Environmental Management Plans (CEMP(s)), secured in the respective DCOs. Further details will be set out within the Detailed Construction Traffic Management Plans for mitigation opportunities for transport and traffic. Section 5 provides further detail on shared mitigation measures secured in the Gate Burton draft DCO **[EN010131/REP6-023]**, the Cottam draft DCO **[EN010133/EX4/C3.1_F]**, the West Burton draft DCO **[EN010132/REP3-006]** and the Tillbridge draft DCO **[EN010142/APP/3.1]**.
- 3.5.4 In addition to the above collaboration on the initial design of the shared cable route corridor and associated mitigation, the undertakers of the Gate Burton, Cottam and Tillbridge schemes have continued to work together to consider revisions to the shared cable route corridor around the former Cottam power station site and access to the Cottam Substation.
- 3.5.5 The Gate Burton, Cottam and Tillbridge schemes all propose to connect into the Cottam Substation, which is situated in the south of the former Cottam power station site. The former power station site is owned by EDF (Thermal Generation) Limited (“EDF”) and is recognised in the draft Bassetlaw Local Plan as a ‘Priority Regeneration Area’. EDF has plans for redevelopment of the area, with detailed proposals yet to be determined. The Cottam Substation would be retained in any redevelopment, but EDF has expressed a preference for the connections and accesses into it to be designed to minimise the impact on its future plans for the wider site. In particular, during discussions with the scheme undertakers in August- September 2023, EDF indicated a preference for the cable routes to enter the Cottam Substation from the south and for the routes for the Gate Burton, Cottam and Tillbridge schemes to be co-ordinated. EDF also indicated a preference for the access into Cottam Substation to be along Torksey Ferry Road in the south to minimise the potential conflict with proposed demolition works and future redevelopment to the extent currently known. Uniper (UK) Limited (which owns assets to the north of Cottam

Substation and is proposing expansion of those assets) also expressed a preference for the relevant schemes to connect into the Cottam Substation from the south and that the construction access be located along Torksey Ferry Road.

- 3.5.6 The undertakers for the Gate Burton, Cottam and Tillbridge schemes worked collaboratively to address the preferences raised by EDF and Uniper, including attendance at joint meetings between the undertakers, EDF and Uniper to discuss the proposals. The details of the meetings held are outlined in **Appendix A** to this Report and included a joint meeting on 23 August 2023 with EDF, Uniper and the technical teams of the relevant schemes to walk the potential cable routes and discuss the technicalities of the proposed route into the Cottam Substation, taking into account the current infrastructure and other constraints. A further meeting was held with EDF on 12 September 2023 with all three developers present to discuss access options. At this meeting it was agreed in principle that EDF was supportive of the schemes expanding their Order limits to accommodate a construction access from Torksey Ferry Road and the additional land to the south of Torksey Ferry Road for flexibility to route the schemes' cables into the Cottam Substation, should all three schemes come forward. Further joint meetings took place in September 2023 as the undertakers' plans to accommodate the scheme changes developed.
- 3.5.7 In response to the preferences raised and discussions held, the undertakers for the Gate Burton scheme submitted a Change Request on 3 October 2023 **[EN010131/CR1-043/8.24]** to request the extension of its proposed Order limits to include further land on and around Torksey Ferry Road which would allow the scheme's cables to enter the Cottam Substation from the south and allow access to be routed along Torksey Ferry Road. The Change Request was accepted by the Examining Authority on 6 October 2023 **[EN010131/PD012]**, with a timetable set for the change request to be considered during the Examination for the scheme.
- 3.5.8 Cottam Solar Project submitted a Change Application on 8 December 2023 to allow a similar extension of its Order limits **[EN010133/AS-063]**. The Change Request was accepted by the Examining Authority on 18 December 2023. Tillbridge Solar Project Order limits also account for this additional area.

3.6 Collaboration on access points

- 3.6.1 The undertakers of all four schemes have continued to work collaboratively (in the case of the Gate Burton, Cottam and West Burton schemes, post-application) to minimise cumulative impacts associated with the construction of access points from the local highway network within the shared cable route corridor. This collaboration has happened in response to comments raised after the submission of the Gate Burton, Cottam and West Burton applications.
- 3.6.2 During examination of the Gate Burton scheme, Lincolnshire County Council queried whether environmental impacts could be reduced through re-considering the design of accesses for the Gate Burton scheme. A similar query was raised on accesses by Nottinghamshire County Council for the same project. When considering these accesses individually, the opportunity was identified to proactively explore whether impacts could be reduced still further by combining accesses within the shared cable route corridor.

- 3.6.3 From an access design perspective, any cumulative impacts are focused principally upon the cable route corridor, with no shared access points related to the sites of the solar arrays or BESSs.
- 3.6.4 On the 20 June 2023, representatives from all four schemes met to explore the potential to share and harmonise access points within the shared cable route corridor. The outcome of this meeting was to agree actions to consider whether any accesses could be combined, particularly any areas where combination would reduce cumulative environmental effects or increase safety.
- 3.6.5 The Gate Burton undertaker produced plans 60664324-HGN-DR-CH-0037 through to 60664324-HGN-DR-CH-0041 (see **Appendix B** of this report) to visually identify accesses proposed for each of the four projects. This information was based upon the latest publicly available information at the start of June 2023. A new plan 60664324-HGN-DR-CH-0045 was included at **Appendix B** of version 2 of the joint report, in order to show interrelationships of accesses on Torksey Ferry Road to account for the proposed changes to the Order limits for the Gate Burton scheme.
- 3.6.6 From this exercise, several areas were identified for further investigation:
- a. A1500 Stow Park Road (north and south)
 - b. A156 High Street near Marton (east and west)
 - c. Headstead Bank (east and west)
 - d. Cottam Road (north and south)
 - e. Torksey Ferry Road (north and south)
- 3.6.7 All the accesses at the above locations have been discussed between undertakers, although any changes would be complex due to the fact that they are part of four separate applications, three of which have been submitted. The outcomes of the engagement thus far are as follows:
- a. The Gate Burton undertaker agreed in conjunction with the Cottam and Tillbridge undertakers to relocate the proposed access on Cottam Road, identified as point 15/12 on Sheet 15 of the Streets, Rights of Way and Access Plan for the Gate Burton Scheme [**EN010131/APP-210/5.3**] to the existing field access denoted by point 15/01. This change was agreed with Nottinghamshire County Council on the 06/07/2023. The documents for the Gate Burton Scheme were amended at Deadline 2 of the Gate Burton Examination on 8 August 2023. By undertaking this change, a common access point to the land south of Cottam Road is achieved for the Gate Burton, Cottam and Tillbridge projects and this would reduce the overall quantum of hedgerow removal to facilitate access at this location.
 - b. For the access proposed on the A156 High Street at point 12/09 on Sheet 12 of the Streets, Rights of Way and Access Plans for the Gate Burton Scheme [**EN010131/APP-210/5.3**], it has been confirmed that all parties are already utilising the same existing field gate to access land to the west of the A156 High Street and therefore access at this location is already co-ordinated.

- c. For the access proposed on Headstead Bank at point 14/02 on Sheet 14 of the Streets, Rights of Way and Access Plans for the Gate Burton Scheme [EN010131/APP-210/5.3], it has been confirmed that the Gate Burton, Cottam and Tillbridge schemes are already utilising the same existing field gate to access land to the east of Headstead Bank and therefore access at this location is already co-ordinated.
- 3.6.8 The Gate Burton undertaker submitted a Technical Note on Access Updates and Cumulative Impact Assessment [EN010131/REP2-045/8.10] as part of its Deadline 2 submissions (8 August 2023). This set out the access changes to further minimise the environmental impacts associated with access for the Gate Burton scheme and includes those access identified in collaboration with the undertakers of the other three schemes. It also provided an updated cumulative impact assessment which considers the effect of each access in light of the other schemes. These changes have been made to the Gate Burton Scheme and require no changes from any other project.
- 3.6.9 The Cottam and West Burton Solar undertakers have made the following updates to their access proposals, with Cottam Change Application being submitted on 8 December 2023 and accepted on 18 December 2023 and West Burton Change Application being submitted on 19 January 2024 and accepted on 24 January 2024:
- a. For access points off the A1500 Stow Park Road, the Cottam scheme Accesses AC110 and AC109 and West Burton scheme Accesses AC112 will be updated to align with the proposed locations presented by the Gate Burton scheme. Therefore, this will co-ordinate the north/south accesses off the A1500 Stow Park Road between the respective projects.
 - b. For access points off the A156 High Street Westbound, representatives of West Burton scheme confirmed that access AC109 Westbound off the A156 High Street will be removed, with access to land parcels to the west off the A156 High Street being accessed via West Burton Access AC111. This change aligns to the access strategy presented by both the Gate Burton and Cottam Solar schemes and therefore access proposals to land to the west off the A156 High Street are now co-ordinated between the respective projects.
 - c. For access points off the A156 High Street Eastbound, representatives of the Cottam and West Burton schemes confirmed that accesses eastbound off the A156 High Street, Cottam Access AC108 and West Burton Access AC110 will be updated to align with the proposed locations presented by the Gate Burton scheme. Therefore, this will co-ordinate the accesses Eastbound off the A156 High Street between the respective projects.
 - d. For access points off Headstead Bank Westbound, representatives of the Cottam Solar Park Scheme confirmed that Access AC105 will be updated to align with the proposed location presented by the Gate Burton scheme. Therefore, this will co-ordinate the accesses Westbound off Headstead Bank between the respective projects
 - e. For access points off Cow Pasture Lane, representatives of the Cottam scheme confirmed that access AC104 will be removed, with access to the land to the north of Cottam Road being serviced via access AC103.

This will therefore minimise the overall number of accesses in this location between the respective projects.

3.6.10 On 6 November 2023, the Tillbridge scheme undertakers confirmed the following updates to their access proposals:

- a. For access point off the A1500 Stow Park Road North, the Tillbridge undertaker has confirmed that their prospective access, Access 10, has been updated to align with the proposed location presented by Gate Burton.
- b. For access point off the A1500 Stow Park Road South, the Tillbridge undertaker has confirmed that their prospective access, Access 9, has been updated to align with the proposed location presented by Gate Burton.
- c. For the works introduced as part of the Gate Burton change request **[EN010131/AS-025]**, the Tillbridge team will access land to the South of Torksey Ferry Road via Shortleys Lane, with aligns to the Gate Burton Access 17/05 presented on Sheet 17 of the Gate Burton Streets, Rights of Way and Access Plans **[EN010131/CR1-011/5.3]**

3.6.11 On the 16 November 2023, the Tillbridge scheme undertakers confirmed the following updates to their access proposals:

- a. For access point off the Cottam Road North, the Tillbridge undertaker confirmed that their prospective access, Access 4, has been updated to align with the proposed location presented by Gate Burton.

3.6.12 The Streets, Rights of Way and Access Plans prepared for the Tillbridge scheme **[EN010142/APP/2.4]** incorporate the coordinated access locations listed above.

3.6.13 The undertakers of all four schemes will continue to engage with each other throughout the DCO process and will update the relevant ExAs where changes to any access locations are agreed between respective projects and subsequently confirmed with the relevant local authority.

4. Shared Development Consent Order Provisions

4.1 Introduction

- 4.1.1 This section sets out the DCO provisions that are shared with other schemes to ensure that the schemes can be implemented satisfactorily in relation to other projects.
- 4.1.2 The Gate Burton and Cottam scheme solar arrays are located on distinct and separate sites. The cable corridor for each project is initially distinct, however they meet close to Gate Burton and then are entirely overlapping from the initial point of overlap to the grid connection location for both projects at the Cottam National Grid Substation. The Tillbridge scheme is also located on a distinct and separate site, although cabling which links Cottam 2 and Cottam 1 crosses under the western part of the Tillbridge Principal Site. The cable corridor for Tillbridge joins Cottam's cabling at the edge of the Tillbridge Principal Site and overlaps along the same route used by Cottam and Gate Burton to the Cottam National Grid Substation. The grid connection for the West Burton scheme partially overlaps/crosses the cable corridors for Cottam and the Gate Burton scheme to connect to West Burton National Grid substation.
- 4.1.3 In the areas of overlap:
- Each undertaker has sought development consent powers over the area of overlap;
 - Each undertaker has sought compulsory acquisition and temporary use powers over the area of overlap;
 - No undertaker has identified specifically where in the area of overlap its infrastructure will be placed to allow flexibility for detailed design post-consent.
- 4.1.4 The overlap is being managed via protective provisions, a private commercial agreement and by bespoke transfer of benefit provisions within each DCO.
- 4.1.5 The approach to ensuring reciprocal protections is confirmed in the Cooperation Agreement (see **Appendix C**) entered into between the parties, at Clause 5.5.
- 4.1.6 Protective provisions for the benefit of the Cottam undertaker are included in Part 4 of Schedule 15 of the Gate Burton draft DCO. The protective provisions for the benefit of the West Burton undertaker are included in Part 5 of Schedule 15 of the Gate Burton draft DCO [EN010131/APP-215/6.1] (and as amended since this version). Protective provisions for the benefit of the Tillbridge undertaker are included in Part 14 of Schedule 15 of the Gate Burton draft DCO.
- 4.1.7 The Cottam draft DCO includes the same protective provisions (with necessary amendments to company names etc.) for the Gate Burton undertaker (Part 11 of Schedule 16), the West Burton undertaker (Part 12 of

Schedule 16) and the Tillbridge undertaker (Part 17 of Schedule 16) **[EN010133/APP-016]** (and as amended since this version).

- 4.1.8 The West Burton draft DCO includes the same protective provisions (with necessary amendments to company names etc.) for the Gate Burton undertaker (Part 12 of Schedule 16), the Cottam undertaker (Part 11 of Schedule 16) and the Tillbridge undertaker (Part 17 of Schedule 16) **[EN010132/APP-017]** (and as amended since this version).
- 4.1.9 The Tillbridge draft DCO **[EN010142/APP/3.1]** includes the same protective provisions (with necessary amendments to company names etc.) for the Gate Burton undertaker (Part 5 of Schedule 15), the Cottam undertaker (Part 4 of Schedule 15) and the West Burton undertaker (Part 6 of Schedule 15).
- 4.1.10 Now that the Tillbridge application has been submitted, the agreed approach between the developers is that Gate Burton, Cottam and West Burton will advise the Examining Authority and/or Secretary of State for their respective schemes (dependant on the stage of the scheme) of any necessary changes to the Tillbridge protective provisions contained in their respective DCOs to reflect the confirmed plan references and works numbers.
- 4.1.11 The following can be noted from the protective provisions:
- a. The protective provisions relate to a specified Works No. in another party's DCO – this is the area of overlap. For the Gate Burton draft DCO this is Work No. 4B, for Cottam it is Work No. 6B, for West Burton it is Work No. 5B and for Tillbridge it is Work No 4C, 4D and 4E;
 - b. The provisions apply unless otherwise agreed between the parties, a standard approach which allows refinement of technical and commercial solutions open post-DCO award, subject to the parameters of each consent;
 - c. The provisions prevent one party from compulsorily acquiring rights etc. in respect of another party's apparatus or the area of overlap without consent, not to be unreasonably withheld or delayed;
 - d. Works within the area of overlap, within a set distance of 25m from the area of overlap or any apparatus or which may adversely affect apparatus (specified works), including proposed apparatus, must be carried out with prior consent, not to be unreasonably withheld or delayed, and subject to a deemed approval mechanism;
 - e. There is provision for advance sharing of plans for specified works and approvals of works being subject to conditions;
 - f. Access must be maintained for another party to access its works; or alternatives provided;
 - g. There are provisions for payment of damages (including an obligation to mitigate loss); and
 - h. The standard arbitration provisions apply.
- 4.1.12 These provisions provide each undertaker sufficient protection from overlapping development consent and compulsory acquisition powers, providing sufficient assurance to each Examining Authority and the Secretary of State that each DCO can be granted as sought. Clause 5.4 of the

Cooperation Agreement between the parties confirms that the protective provisions included in the draft DCOs are appropriate.

- 4.1.13 In addition, the undertakers have worked closely together to negotiate a standard set of protective provisions where these relate to third party interests in the cable route corridor area of overlap, to seek to minimise the burden on stakeholders and ensure consistency in protections offered. For example, the undertakers have collaborated in respect of the Canal and River Trust (CRT) protective provisions to agree consistent provisions across all three projects. These protective provisions have now been agreed between the CRT, Gate Burton Energy Park, Cottam Solar Project and West Burton Solar Project. The agreement with Gate Burton is explained in the Statement of Common Ground (SoCG) for that party, with the signed version submitted at Deadline 4 [EN010131/REP4-016].

4.2 Transfer of benefit provisions

- 4.2.1 In addition to including reciprocal protective provisions, each undertaker has included bespoke transfer of benefit provisions within the draft DCO, to facilitate ease of transfer of relevant rights to the other named undertakers where they relate to the shared cable corridor (e.g. for Gate Burton this is Work No. 4B).
- 4.2.2 The purpose of this provision is to enable the appointment of a joint contractor, or to allow one or more undertakers to undertake works on behalf of the other, if appropriate, post-detailed design. This would reduce the impact of the scheme construction.

4.3 Cooperation agreement

- 4.3.1 On 5 July 2023, a formal Cooperation Agreement was signed between the undertakers of the four projects; the Gate Burton undertaker, the Cottam undertaker, the West Burton undertaker and the Tillbridge undertaker. A copy of this agreement is provided in **Appendix C**.
- 4.3.2 The Agreement sets out the fundamental principles of cooperation between the parties, and how they will interact with third parties. Specifically, the agreement requires:
- The parties must cooperate with each other and act reasonably and in good faith (Clause 4.1) including specifically to mitigate adverse impacts on persons with an interest in the land affected by the Projects (Clause 4.1.1);
 - Each party must act as a Reasonable and Prudent Developer (Clause 4.2) i.e. acting in good faith as a skilled and experienced developer would;
 - There is agreement that the protective provisions included in the draft DCOs in favour of the other parties (as relevant) are appropriate (Clause 5.4);
 - There is agreement that protective provisions for Tillbridge on substantially the same terms will be included at the appropriate time (Clause 5.5) and vice versa in the Tillbridge draft DCO;

- e. There is an agreement to enter into a Further Agreement in due course, to cover the matters in **Appendix C**, which includes coordinating stakeholder and community engagement post-consent, and seeking to minimise interference to landowners and impacts on the environment. The agreement will also establish how the parties will work together to discharge relevant DCO requirements in a consistent manner.
- 4.3.3 Therefore, the Cooperation Agreement not only secures cooperation and working in good faith between the parties, it ensures they work together to reduce environmental and land impacts. This level of cooperation between developers is unusual and has been achieved through dedicated positive collaboration between parties. The SoCG between the parties (submitted to the Examinations of Gate Burton [EN010131/APP-REP-017/4.3K], Cottam [EN010133/REP2-066] and West Burton [EN010132/REP1-071].) confirms discussions will continue throughout the Examination phase and into construction but there are no matters of disagreement between the parties.

5. Shared Mitigation Measures in Draft DCOs

5.1 Introduction

5.1.1 This section identifies shared mitigation measures that have been identified and developed between the projects. As requested within the Rule 6 letter for Gate Burton, the section below also sets out how these mitigation measures are secured in the Gate Burton draft DCO, with references to the Cottam and West Burton draft DCOs where appropriate.

5.2 Shared cable route

5.2.1 The Gate Burton Outline Design Principles Statement **[EN010131/REP4-005/2.3]**, the Cottam Concept Design Parameters and Principles document **[EN010133/REP3-020]**, the West Burton Concept Design Parameters and Principles **[EN010132/REP3-020]** and the Tillbridge Outline Design Principles Statement **[EN010142/APP/7.4]** set out a number of design measures that were embedded during the development of the schemes. The cable route corridor for the Gate Burton scheme is Work No. 4 in the draft DCO **[EN010131/CR1-017/6.1]**, Work No. 6 for Cottam **[EN010133/EX4/C3.1_F]**, Work No. 5 for West Burton **[EN010132/REP3-006]** and Work No. 4 for Tillbridge **[EN010142/APP/2.3]**. Area 4B in the Gate Burton Works Plans **[EN010131/CR1-009/5.2]**, Area 6B in the Cottam Works Plans **[EN010133/EX4/C2.4_C]** and Area 5B in the West Burton Works Plans **[EN010132/REP1-004]** show the area of the cable route corridor shared by the Gate Burton, West Burton, Cottam and Tillbridge schemes, with this area covering a significant proportion of the cable route. Area 4C in the Tillbridge Works Plans **[EN010142/APP/2.3]** shows the area of the Cable Route Corridor shared with Cottam, area 4D in the Tillbridge Works Plans **[EN010142/APP/2.3]** shows the area of the Cable Route Corridor shared with West Burton and area 4D and 4E in the Tillbridge Works Plans **[EN010142/APP/2.3]** shows the area of the Cable Route Corridor shared with Gate Burton. These overlaps have been intentional to reduce environmental and social impacts of the cable routes.

5.2.2 Avoidance areas and construction methods (such as Horizontal Directional Drilling (HDD)) (as shown on Gate Burton ES Volume 3: Appendix 2-B (Figure 1) **[EN010131/REP2-019/3.3]**) to reduce effects are shared across all projects within the shared area of the cable route corridor. There has been particular joint working on the section of the cable route corridor near the River Trent, including working collaboratively with the Canal and River Trust to agree Protective Provisions in this area (e.g. see relevant Gate Burton SoCG with progress on these discussions **[EN010131/REP4-016/4.3I]**). The agreed position has also been incorporated within the **draft DCO** for Tillbridge **[EN010142/APP/3.1]**.

5.3 Cultural heritage

5.3.1 Chapter 7: Cultural Heritage of the Gate Burton ES **[EN010131/APP-016/3.1]** details additional mitigation measures comprising of excavation and recording (strip, map and record) of archaeological remains in advance of construction activities. The sites to which excavation and recording relate are identified

within the Archaeological Mitigation Strategy **[EN010131/CR1-030/7.6]** and secured by Requirement 11 of the Gate Burton draft DCO.

- 5.3.2 The shared cable route corridor includes mitigation specific to the corridor proposed with the Cottam and West Burton schemes, on Sites 8 – 16 as labelled in the Archaeological Mitigation Strategy. This mitigation is also included in the West Burton and Cottam Written Schemes of Investigation (WSI) **[EN010133/EX4/C6.3.13.7_A and EN010132/APP-122]** which are secured by Requirement 12 of the Cottam draft DCO **[EN010133/EX4/C3.1_F]** and by Requirement 12 of the West Burton draft DCO **[EN010132/REP3-006]**.
- 5.3.3 Avoidance areas and construction methods (such as HDD) to reduce effects are shared across all projects within the shared cable route corridor and this includes the Tillbridge Solar project. The Tillbridge Archaeological Mitigation Strategy that will be prepared post-DCO Application submission will take into account these avoidance areas. For the purposes of the assessment of interrelationships and cumulative effects, it is assumed that the Tillbridge Solar Archaeological Mitigation Strategy will secure the same archaeological mitigation measures as the Gate Burton, Cottam and West Burton schemes within the shared cable route corridor.

5.4 Traffic and transport

- 5.4.1 Chapter 13: Transport and Access of the Gate Burton ES **[EN010131/REP4-013/3.1]** and Chapter 16: Transport and Access of the Tillbridge ES **[EN010142/APP/6.1]** state that the opportunity to combine mitigation across all four of the solar DCO schemes will be explored in order to reduce cumulative impacts during the construction phase.
- 5.4.2 In the event the construction schedules are overlapping, a joint Construction Traffic Management Plan (Joint CTMP) would be produced that will set out construction traffic management and control measures relevant to those areas where vehicle routes overlap.
- 5.4.3 At present there is no certainty that the other schemes will be consented and therefore that a Joint CTMP would be required. If they are all consented, they may be subject to different requirements on construction traffic or timescales, which may make production of one document across all projects challenging. No single party has authority over another and each DCO only controls the activities for that project. For all these reasons, a firm commitment cannot be made to prepare or agree a Joint CTMP. Notwithstanding the above, it is the developers' intention to together develop a Joint CTMP and this approach has been agreed between the parties as evidenced in this report and the cooperation agreement.
- 5.4.4 The Framework CTMP for the Gate Burton scheme sets out the possibility of a Joint CTMP in paragraph 3.2.6 and 7.6.1 **[EN010131/APP 167 and 168/3.3 and as amended]**. The Outline CTMPs for Cottam **[EN010133/REP3-008]**, West Burton **[EN010131/REP3-012]**, and Tillbridge **[EN010142/APP/7.11]** also provide for a Joint CTMP. A Joint CTMP could support implementation of shared mitigation measures such as joint traffic management, joint consultation with Lincolnshire County Council traffic officers, combined vehicle access and routing plans, shared use of construction compounds, taking a

holistic approach to construction traffic planning and management. In the meantime, the four developers are working closely together to identify further ways to collaborate and reduce impacts on communities and the environment. Progress on this is reported here and will be updated throughout the Examinations.

5.5 Ecology

5.5.1 Chapter 8: Ecology and Nature Conservation of the Gate Burton ES **[EN010131/REP4-009/3.1]** and Chapter 9: Ecology and Nature Conservation of the Tillbridge ES **[EN010142/APP/6.1]** state that where practicable, joint mitigation will be undertaken across all four of the solar DCO schemes within the shared cable route corridor. The detailed CEMP(s) will outline all ecological mitigation, which will likely include combined pre-construction surveys, protected species mitigation, translocation (if required), monitoring and post construction reinstatement plans. Joint ecological mitigation is secured in the CEMP by Requirement 14 of the Gate Burton draft DCO **[EN010131/CR1-017/6.1]** and Requirement 12 of the Tillbridge draft DCO **[EN010142/APP/3.1]**.

6. Cumulative Impact Assessment

6.1 Updated information

- 6.1.1 The Gate Burton, Cottam and West Burton undertakers relied upon the PEIRs for the other projects when preparing the cumulative impact assessment, presented in the Environmental Statements (ESs) for the applications. Now that the ESs are available for all three projects, the three developers have considered whether there have been any changes affecting the assumptions and conclusions made in its cumulative impact assessments.
- 6.1.2 No PEIR was available for the Tillbridge scheme when the Gate Burton, Cottam and West Burton cumulative impact assessments were carried out and instead the three undertakers relied on the Tillbridge Scoping Report. After the applications were submitted, a PEIR for Tillbridge was published. The three developers have therefore also considered whether there have been any changes between Tillbridge's Scoping Report and PEIR which affect the assumptions and conclusions made in the cumulative impact assessments.
- 6.1.3 Prior to Deadline 1 on the Gate Burton Examination (18 July) the Gate Burton undertaker reviewed the recently published Cottam Solar Project ES, West Burton Solar Project ES and Tillbridge Solar PEIR to identify whether the information contained would alter the cumulative assessment contained within the Gate Burton Scheme's ES. No changes to the conclusions in relation to likely significant cumulative effects were identified and no updates are required to the Gate Burton Scheme ES as a result.
- 6.1.4 Prior to the publication of the version of the Joint Interrelationships Report dated 3 October 2023, the Cottam and West Burton undertakers also reviewed all new information. The two undertakers confirmed that there is no change to likely significant cumulative effects and no updates are required to the Cottam or West Burton Scheme ESs.
- 6.1.5 The Tillbridge ES has considered all published information on the Gate Burton, Cottam and West Burton schemes and provides a cumulative effects assessment reflecting this information within Chapter 18: Cumulative Effects and Interactions of the ES [EN010142/APP/6.1].
- 6.1.6 The published documents reviewed, and the review of the cumulative assessments contained within them as submitted Environmental Statements for each of the environmental disciplines is set out within a Technical Note provided as **Appendix E** to this Inter-Relationships Report.
- 6.1.7 The Technical Note provides a summary of the review of information made available subsequent to submission of the applications for the Gate Burton, West Burton and Cottam schemes DCOs. This Technical Note has been updated to take into account information published as part of the Tillbridge ES.
- 6.1.8 The joint review of the published ESs confirm that the cumulative effects reported within the Gate Burton, West Burton, and Cottam Environmental Statements as submitted remain unchanged.
- 6.1.9 Given that construction traffic has proved a particular area of interest for local communities and local authorities, **Appendix D** provides a detailed

assessment of the cumulative traffic impacts. Further detail on the cumulative traffic assessment for Tillbridge is presented within Chapter 18: Cumulative Effects and Interactions of the ES [EN010142/APP/6.1].

- 6.1.10 Following the close of Examination for Gate Burton Energy Park, the West Burton and Cottam Solar Projects updated **Appendix E** of the Joint Report on Interrelationships to include Soils and Agriculture as a standalone topic in line with ESs for these two schemes (West Burton ES Chapter 19 Soils and Agriculture [EN010132/APP-057] and Cottam ES Chapter 19 Soils and Agriculture Revision A [EN010133/REP-010]) and in response to the Cottam ExA's Written Question 2.8.7 [EN010133/PD-015]. This was not done previously, as this assessment topic was included in the Gate Burton ES Chapter on Socio Economics and Land Use [EN010131/REP4-010] and in the Socio-economics chapter of the PEIR for Tillbridge.. It is noted that the examination of the Cottam Solar Project has now also finished. A stand-alone Soils and Agriculture chapter has been published as part of the Tillbridge ES (refer to Chapter 15 of the Tillbridge ES [EN010142/APP/6.1]). Gate Burton Energy Park, Cottam Solar Project and West Burton Solar Project all submitted Technical Notes on the Cumulative Effects of Additional Schemes to the respective Examinations [EN010131/REP4-049, EN010133/REP4-059 and EN010132/EX4/ WB8.2.5]. The purpose of these Technical Notes was to review and assess Schemes that have emerged since the start of the Joint Interrelationships Report, namely, Luminous Energy, One Earth Solar Farm and Great North Road Solar Park. These schemes have also been considered as part of Chapter 18: Cumulative Effects and Interactions of the Tillbridge ES [EN010142/APP/6.1] and Appendix 18-1: List of Cumulative Developments of the Tillbridge ES [EN010142/APP/6.3].

7. Summary of matters coordinated between NSIPs

- 7.1.1 This Report sets out the ways in which the undertakers of the Gate Burton, Cottam, West Burton and Tillbridge schemes have worked collaboratively to minimise the cumulative impacts associated with the projects, maximise the benefits of the scheme and introduce consistency into applications and assessments. The undertakers are of the view that the joint working between the four parties is an example of best practice within the energy industry, showing what can be achieved when separate developers work together towards common goals.
- 7.1.2 As a result of the collaborative working, the undertakers of the Gate Burton, Cottam, West Burton and Tillbridge schemes have developed a shared cable route corridor and a variety of shared mitigation measures. Mechanisms have been introduced to all submitted DCOs to enable each developer to develop the shared cable route corridor on behalf of all parties. This will help reduce the impacts that would otherwise be associated with developers either affecting several different routes, or the same routes at different times.
- 7.1.3 A collaboration agreement has been reached between all four parties to govern joint working going forward and introduce further efficiencies to the process.
- 7.1.4 The teams have also worked together extensively to align survey methodologies for ESs, share survey work to minimise disturbance to landowners and sites and identify ways to reduce impacts. Work carried out by all parties to minimise individual and cumulative impacts has meant few cumulative impacts are reported over the four projects. This collaborative working is continuing after submission of applications, with the most recent focus being on minimising the impact of the accesses within the shared cable route corridor. This work is likely to further reduce impacts.
- 7.1.5 The Gate Burton, West Burton, Cottam and Tillbridge undertakers have considered the now published ES information and do not consider there to be any changes to the conclusions of the cumulative assessments of the respective schemes.
- 1.1.1 A SoCG has been prepared between the four parties that does not currently identify any areas of disagreement. This was provided at Deadline 1 in the Gate Burton scheme Examination, with a signed version provided at Deadline 5 [EN010131/APP/4.3K]. Signed versions of the SoCG have been submitted to the Cottam Examination [EN010133/REP2-066] and to the West Burton Examination [EN010132/REP1-071]. It is expected that similar SoCGs will also be submitted for Tillbridge examination in due course.



Appendix A Summary of Discussions between Undertakers

Note attendees from each project include the client and contractors working on their behalf. All meetings below were on Microsoft Teams unless stated otherwise.



Date	Attendees	Record of Engagement
15/02/22	Gate Burton, Cottam and West Burton undertakers and their land reps.	Discussion on project status and landowner engagement for early non-intrusive surveys
Recurring meetings 15/02/22 – 04/07/22	Gate Burton, Cottam and West Burton undertakers and their comms teams	Regular fortnightly/monthly meetings to align on non statutory and statutory communications
Recurring meetings 17/02/22 – 07/11/22	Gate Burton, Cottam and West Burton undertakers and their environment teams	Heritage team discussions on approach to evaluation for all Schemes. Regular meeting scheduled during preparation of DCO submissions. Regular fortnightly/monthly discussions to align on heritage approach
In person meeting 22/02/22	Gate Burton, Cottam and West Burton undertakers	High level meeting to discuss Gate Burton, West Burton and Cottam projects
Recurring meeting 10/03/22 – 14/07/22	Gate Burton, Cottam and West Burton undertakers planning and environment leads	Monthly meetings with the planning and environment leads for Gate Burton, West Burton and Cottam.
17/03/22	Gate Burton, Cottam and West Burton undertakers and their land reps.	Discussion on survey access agreements with landowners and access logistics
23/03/22	Gate Burton, Cottam and West Burton undertakers	Discussion on cable corridor width and next steps for survey work
29/03/22	Gate Burton, Cottam and West Burton undertakers and their ecologists	Shared cable corridor: discussion on Phase 1 Habitat Surveys, potential of Terrestrial invertebrate/reptile surveys habitats and flora surveys and breeding bird surveys. Also discussed Great Crested Newt Pond buffers.



Date	Attendees	Record of Engagement
05/04/22	Gate Burton, Cottam and West Burton planning and environment teams	Review of proposed layout of West Burton and Cottam Solar Farms and the likelihood of cumulative effects and how cumulative effects could be assessed effectively.
12/04/22	Tillbridge, Cottam and West Burton	Introduction to the Tillbridge Solar scheme following internal kick-off meeting
28/04/22	Gate Burton, Cottam and West Burton ecology teams	Discussion on the buffer zones for ecology surveys on shared cable route corridor
In person meeting 05/05/22	Gate Burton, Cottam and West Burton undertakers and their comms teams	Discussion on approach to statutory consultation.
24/05/22	Gate Burton, Cottam and West Burton undertakers and their ecologists	Discussion on minimising effects of the shared connection corridor regarding ecology.
21/06/22	Gate Burton, Cottam and West Burton undertakers and planning teams	Discussion on cable route corridor Heads of Terms
05/08/22	Tillbridge, Cottam, West Burton and Gate Burton client teams	Introduction to the Tillbridge Solar scheme following internal kick-off meeting
01/09/22	Low Carbon (Gate Burton), Island Green Power and Lanpro (Cottam and West Burton)	Discussion on joined up approach to intrusive cable route surveys



Date	Attendees	Record of Engagement
Hybrid Meeting 13/09/22	Low Carbon and Pinsent Masons (Gate Burton), Island Green Power (Cottam and West Burton)	Workshop to discuss shared cable route corridor, protective provisions, various powers in overlapping area and continued cooperation ahead of finalising respective DCO applications. Hybrid meeting but held at Pinsent Masons London office
30/09/22	Gate Burton, Cottam, West Burton, Tillbridge planning teams and client; PINS, LCC, WLDC	Quadrupartite meeting with the four project developers and the PINS. Discussing interplay between the four projects.
10/10/22	Gate Burton, Cottam and West Burton Heritage Teams	Discussion on shared route within cable route corridor including results of evaluation and mitigation strategies
21/10/22	Gate Burton, Cottam and West Burton Heritage Teams	Discussion on shared route within cable route corridor including approach to mitigation strategies
07/11/22	Gate Burton, Cottam and West Burton Heritage Teams	Discussion on aligning mitigation strategies for all three schemes
17/11/22	Tillbridge, Cottam and West Burton Solar	Status update on the Tillbridge Solar and Cottam schemes interaction
16/12/22	Gate Burton, Cottam and West Burton Heritage Teams	Finalising aligned mitigation strategies for all three schemes



Date	Attendees	Record of Engagement
In person meeting 03/01/23	Gate Burton, Cottam and West Burton undertakers and their lands teams	Joint in person meeting with cable route landowner
05/01/23	Gate Burton, Cottam and West Burton Heritage Teams	Reviewing finalised aligned mitigation strategies for all three schemes
30/01/2023	Tillbridge and Gate Burton Heritage Teams	Discussion on approach to evaluation
Recurring meeting 22/02/23 - present	Gate Burton, Cottam and West Burton undertakers and their lands teams	Fortnightly meetings to discuss approach to the cable route, heads of terms negotiations with landowners and knowledge sharing
27/03/23	Tillbridge, Cottam and West Burton	Discussion about the potential for collaboration including survey data sharing
In person meeting 13/04/23	Gate Burton, Cottam and West Burton undertakers and their lands teams	Joint in person meeting with cable route landowner
Joint Site Walkover 26/04/23	Gate Burton and Tillbridge landscape teams	Walkover of cable route corridors and overall review of landscape and visual interrelations between Gate Burton and Tillbridge projects.



Date	Attendees	Record of Engagement
26/05/23	Tillbridge, Cottam, West Burton and Gate Burton technical teams	Technical discussion about cable corridor interaction with other projects
31/05/23	Tillbridge, Cottam, West Burton and Gate Burton	Meeting concerning co-ordination of solar DCO cable route corridors
02/06/23, 08/06/23 09/06/23, 14/06/23, 20/06/23, 30/06/23	Gate Burton, Cottam, West Burton and Tillbridge teams	Discussion on sharing information around cable route options to the south of Marton. Discussion on joint meeting with the Canal and Rivers Trust
13/06/23	Cottam, West Burton and Tillbridge teams	Discussion of ecology and heritage data
15/06/23, 21/06/23, 28/06/23, 05/07/23, 10/07/23, 15/08/23, 16/08/23, 27/09/23	Cottam, West Burton and Tillbridge teams	Discussion of Cottam, West Burton and Tillbridge site and cable route interactions



Date	Attendees	Record of Engagement
13/06/23	Gate Burton, Cottam, West Burton and Tillbridge land referencing teams	Joint approach on cable route landowners
14/06/23	Gate Burton, Cottam and West Burton	Cable route landowner update
30/06/23	Gate Burton, West Burton, Cottam and Tillbridge Highways Engineering Teams	Discussion about access differences and commonality for accesses in the shared cable route corridor.
30/06/2023	Gate Burton, Cottam, West Burton and Tillbridge	Joint approach on extra cable route surveys
14/07/23	Gate Burton, Cottam, West Burton and Tillbridge and Canal and Rivers Trust	Joint approach on protective provisions
18/07/23	Gate Burton, Cottam and West Burton	Discussion on access into Cottam substation
20/07/23	Gate Burton, Cottam, West Burton and Tillbridge	Discussion around the cables near Cottam substation
25/07/23	Gate Burton, Cottam, West Burton and Tillbridge design teams	Technical discussion around Cottam substation



Date	Attendees	Record of Engagement
26/07/23	Gate Burton, Cottam and West Burton	Cable route landowner update
10/08/23	Gate Burton, Cottam, West Burton and Tillbridge and EDF	Discussion on Cottam substation
14/08/23	Gate Burton, Cottam, West Burton and Tillbridge	Discussion around Cottam substation
15/08/23	Gate Burton, Cottam, West Burton and Tillbridge	Cable route discussion
17/08/23	Gate Burton, Cottam, West Burton, Tillbridge and Uniper	Discussion on Cottam substation
18/08/23	Gate Burton, Tillbridge	Discussion on cable route landowners
23/08/23	Gate Burton, Cottam, West Burton, Tillbridge, EDF and Uniper	Site walkover to look at constraints around Cottam substation
31/08/23	Gate Burton, Cottam, West Burton and Tillbridge and Uniper	Discussion on Cottam substation



Date	Attendees	Record of Engagement
01/09/23	Gate Burton, Cottam and West Burton	Cable route discussion
01/09/23	Gate Burton, Cottam, West Burton and Tillbridge	Cable route discussion
04/09/23	Gate Burton, Cottam, West Burton and Tillbridge technical teams	Technical discussion around Cottam substation
11/09/23	Gate Burton, Cottam, West Burton and Tillbridge	Cable route and substation discussion
12/09/23	Gate Burton, Cottam, West Burton, Tillbridge and EDF	Discussion on Cottam Substation
12/09/23	Gate Burton, Cottam and West Burton	Cumulative Effects Comparison table
13/09/23	Gate Burton, Cottam and West Burton	Cable route landowner update
14/09/23	Gate Burton, Cottam, West Burton and Tillbridge and Uniper	Discussion on Cottam substation



Date	Attendees	Record of Engagement
20/09/23	Gate Burton, Cottam and West Burton heritage teams	Discussion on cable route surveys
25/09/23	Gate Burton, Cottam, West Burton and Tillbridge and EDF	Discussion on Cottam substation
26/09/23	Gate Burton, Cottam, West Burton and Tillbridge and Uniper	Discussion on Cottam substation
27/09/2023	Gate Burton, Cottam and West Burton	Cable route landowner update
02/10/2023	Gate Burton, Cottam, West Burton, Tillbridge and Uniper	Update meeting between the developers and Uniper
03/10/23	Gate Burton, Cottam, West Burton, Tillbridge and EDF	Update meeting between the developers and EDF
05/10/23	Gate Burton, Cottam, West Burton, Tillbridge	Update between the developers
11/10/23	Gate Burton, Cottam, West Burton	Cable route update



Date	Attendees	Record of Engagement
11/10/23	Gate Burton, Cottam, West Burton, Omnia	Technical cable route discussions
13/10/23	Gate Burton, Cottam, West Burton, Tillbridge	Cable route discussions
20/10/23	Gate Burton, Cottam, West Burton, Tillbridge, Aecom	Technical cable route discussions
24/10/23	Gate Burton, Cottam, West Burton, Tillbridge, EDF, Uniper	Joint developer, EDF and Uniper catch up
25/10/23	Gate Burton, Cottam, West Burton	Cable route update
08/11/23	Gate Burton, Cottam, West Burton	Cable route update
14/11/23	Gate Burton, Cottam, West Burton, Tillbridge, EDF, Uniper	Joint developer, EDF and Uniper catch up
16/11/23	Gate Burton, Cottam, West Burton, Tillbridge, Network Rail	Joint developer meeting with Network Rail to discuss cable crossings



Date	Attendees	Record of Engagement
28/11/23	Gate Burton, Cottam, West Burton, Tillbridge, EDF, Uniper	Joint developer, EDF and Uniper catch up
30/11/23	Gate Burton, Cottam, West Burton	Cable route update
06/12/23	Gate Burton, Cottam, West Burton	Cable route update
15/12/23	Gate Burton, Cottam, West Burton, Tillbridge, Network Rail	Joint developer meeting with Network Rail to discuss cable crossings
18/12/23	Gate Burton, Cottam, West Burton, Tillbridge	Meeting to discuss cable formations
19/12/23	Gate Burton, West Burton, Cottam, Tillbridge, EDF, Uniper	Joint developer, EDF and Uniper catch up
09/01/24	Gate Burton, West Burton, Cottam, Tillbridge, EDF, Uniper	Joint developer, EDF and Uniper catch up
23/01/24	Gate Burton, West Burton, Cottam, Tillbridge, EDF, Uniper	Joint developer, EDF and Uniper catch up



Date	Attendees	Record of Engagement
20/02/24	Gate Burton, West Burton, Cottam, Tillbridge, EDF, Uniper	Joint developer, EDF and Uniper catch up
05/03/24	Gate Burton, West Burton, Cottam, Tillbridge, EDF, Uniper	Joint developer, EDF and Uniper catch up